

Idaho, Utah, and Nevada NAIS Project Update

Sept 28, 2005
Chicago, IL

NAIS Strategic Plan

Key components

- Premises registration
- Animal identification
- Animal tracking

NAIS Strategic Plan

- ✓ **Stage I: Preparatory**
- ✓ **Stage II: Premises Identification**
- ✓ **Stage III: Animal Identification**
- **Stage IV: Animal Tracking**
- **Stage V: NAIS Full implementation**

NAIS Strategic Plan

- ✓ **Stage I: Preparatory**
- State animal identification committee
- Determining the number of animals and premises
- State officials have legislative and regulatory authority to:
 - Participate in the National Animal Identification System
 - Require the registration of premises
 - Require identification of animals
- A system for distribution of NAIS literature
- Applicable Federal regulations are enforced
- Preparing quarterly reports of NAIS activities

NAIS Strategic Plan

- ✓ **Stage II: Premises Identification**
- Stage I continue to be met.
- Idaho NAIS compliant premises registration system
- 35 percent of the qualifying premises
 - Exception “Equine”
- Requirement that registered premises update the contact information at least annually

NAIS Strategic Plan

- ✓ **Stage III: Animal Identification**
- Stage II continue to be met
- ✓ Identifying Nonproducer participants
 - ✓ Animal Identification Number (AIN) Managers
- A system to issue AIN's
 - In process
- 80 percent of the qualifying premises registered
- 25 percent of the qualifying animals
 - National Animal Tracking Repository

Premises Registration

- Premises Registration System
 - Standard Premises Repository System
 - Compliant Premises Repository System 'GAM'
 - January 2005
 - Other (EMRS, GDB, & NAIS Staff)
- State Premises Systems (CPRS) (22,061)
- Idaho --15,813
- Utah -- 6395
- Nevada -- 295
- Other (EMRS, GDB) 2,954 ID numbers (25,015)
- Data Sources are Regulatory Databases
 - Maintained by regulatory personnel
 - Missing addresses and PO Box corrections are being handled by regulatory personnel

Premises Registration Issues

■ Exception Processing

- Correct address, not in US Postal database
 - Secondary Validation
- Incorrect address
 - PO Box #
 - Incorrect or missing address
 - Mismatched zip code and city
 - Incorrect Syntax i.e. HWY vs State Road

■ Final Validation based on:

- GPS coordinates and driving directions

■ State “GPMS” Exception Tool

■ SPRS Data Management Center “DMC”

- Nevada, Utah and Idaho

Implementation Project -- Idaho

Premises Break down

Premises with NAIS Premises #'s

- 100% of Cervidae Farms
- 70% of Cattle Ranches
- 85% of Dairy Farms
- 86% of Sheep flocks
- 89% of Veterinary Practices
- 80% of Abattoir
- 28% of Equine Facilities

Implementation Project -- Utah

Premises with NAIS Premises #'s

- 98% of Cervidae Farms
- 64% of Cattle Ranches
 - Concurrent with Brand Registration
- 60% of Sheep flocks
- 8% of Equine Facilities

■ Plan for 2005/2006

- Premises Registration Focus
 - Packing plants
 - Dairy
 - Veterinary Practices
 - Markets
 - Public Lands

Implementation Project -- Nevada

■ Current Activity

- 97% of Sheep flocks
 - Refined exception handling processes
- NWPP Producers upon request

■ Plan for 2005/2006

- Premises Registration Focus
 - Beef Cattle Operations
 - Dairy
 - Markets
 - Public Lands
 - Other

Implementation Project -- Idaho Regulatory Database

- Previous Cervidae data in new ID State Database
- Regulatory Health Forms to Electronic (final process)
- Individual Electronic Identification of Elk ~25%
 - EID being matched to USDA visual tags
 - All previous State maintained individual data
 - Link with Diagnostic lab for CWD test results

A scenic landscape of a mountain valley in Idaho. In the foreground, a wooden post-and-rail fence runs across the frame. Behind it, a river flows through a valley, surrounded by dry, yellowish-brown grass and scattered trees. In the middle ground, a small town with several buildings is visible. The background features a range of rugged, rocky mountains with some snow patches under a clear sky.

Here We Have Idaho

NAIS STRATEGIC PLAN

IDAHO IMPLEMENTATION PROCESS

- 1. Implemented legislative authority to protect information and require compliance with NAIS Strategic Plan**
 - 2. Registering Premises**
 - 3. Proceeding with animal tracking under current regulatory authority**
 - 4. Begin animal tracking that has not been done before, requiring rules to be drafted and implemented**
- 

Present and Future Plans



● OUTREACH

● PROCESS

● TECHNOLOGY

● 48 HOUR TRACEBACK

Outreach

- **Developed an Idaho brochure from the Utah brochure**
- **Attended and presented information at regional beef schools, producer meetings, events, regional brand inspector meetings in cooperation with coalition participants**
- **Use printed NAIS PIN cards as incentive for attendance**
- **Press Releases**
- **Rework and maintain a more relative web site - (idahoid.us)**
- **Setup cooperative events with Utah, Nevada, Duck Valley Reservation, Fort Hall, Washington, Oregon, and California**

Outreach (continued)

- In cooperation with U of I Extension we are building a traveling trailer to house hands on exhibits and display information regarding NAIS and attend fairs, trade shows, county, producer, species group meetings and events
- Use state resources to aid producers in tagging and data entry and use the opportunity to educate area producers and non producer participants
- Monitor and maintain projects already in progress to find processes and products that work



Process

- **Perform system analysis on internal animal industries systems**
- **Outline system functions based on PIN's and AIN's**
- **Work closely with coalition members to maximize resources and report findings**
- **Use the system approach to tag reading**
- **Working closely w/ Nevada and Utah to gain program efficiencies**

Technology

- **Experience w/ tags, readers, software, and communication**

We have and use stick, paddle, hand-held, panel, blue tooth, serial, serial to USB, point to point Bluetooth readers

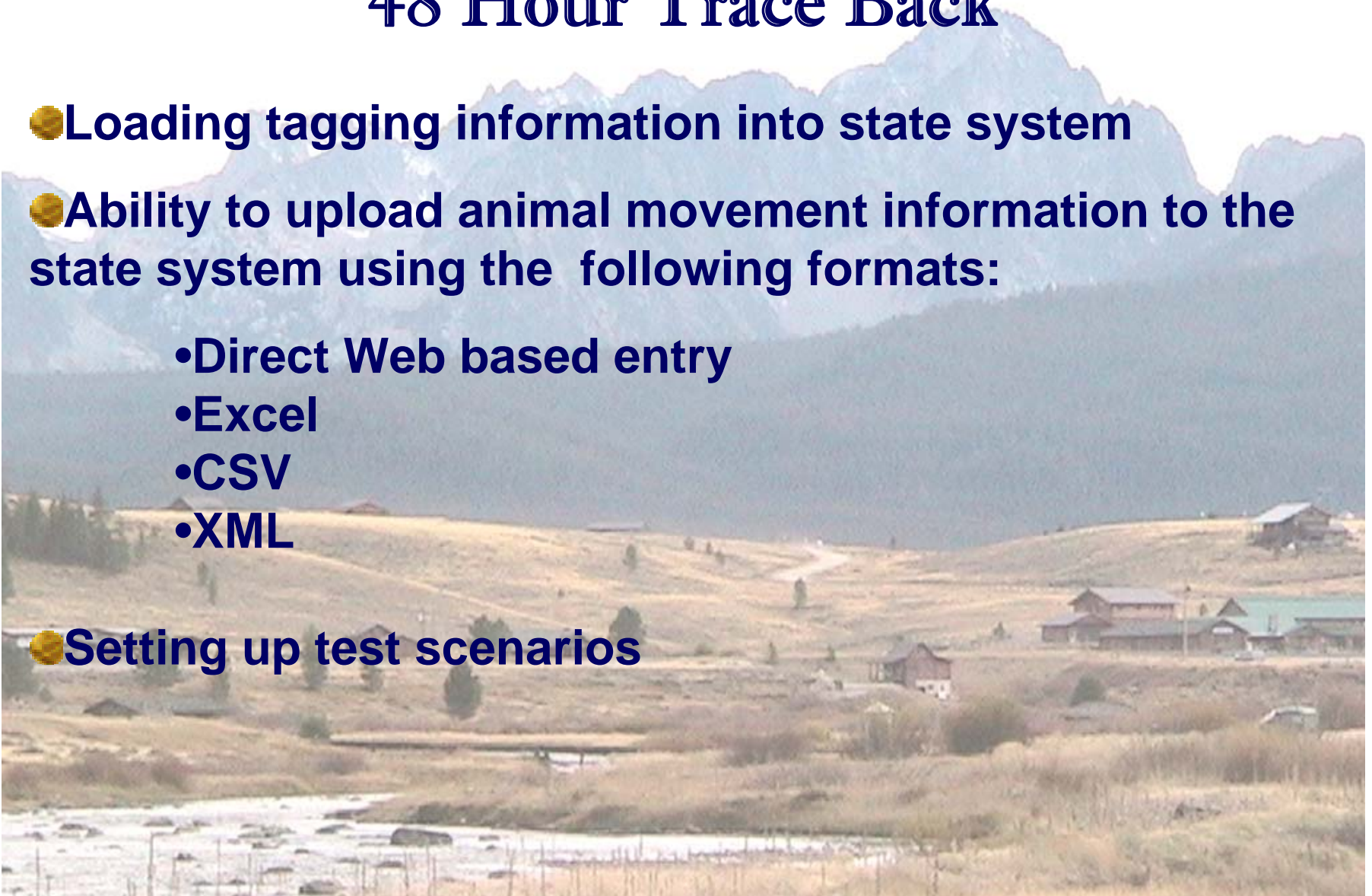
- **A variety of use scenarios**

- **Successful data collection software**



48 Hour Trace Back

- Loading tagging information into state system
- Ability to upload animal movement information to the state system using the following formats:
 - Direct Web based entry
 - Excel
 - CSV
 - XML
- Setting up test scenarios



Idaho NAIS Coalition Project

- **Biomark – Systems integration, tag and reader supplier, RFID consultant**
- **Caine Vet Teaching Center – On ranch application to monitor tag retention, animal movement reporting. Outreach and education**
- **Duck Valley Tribes – Methods of success for the Tribe**
- **Global Animal Management (GAM) – Systems integration between State departments (ISDA, Brands, Caine Vet Teaching Center, IVMA,) USDA (Scrapies), provide data collection software, integrate ISDA data into one centralized database keyed on PIN's and AIN's**
- **Idaho State Police – Idaho Brand Board**
- **Northwest Pilot Project - Prove validity of group lot movements and define efficient and effective methods of identification**
- **Ranger ID – Systems integration, pilot testing, technology development**
- **U of I Extension – education and Outreach**

Current Idaho Projects

Livestock Markets (4 of 13)	Idaho State Fairs (2)
Cow-Calf Operations (12)	County Fairs
Feedlots (5)	State 4-H and FFA
Feedlot to Slaughter (3)	Interstate Cooperation (3)
Sheep (3)	Tribe Cooperation (2)
Pigs to Slaughter (1)	Cervidae (82)
Calf Ranch (2)	Veterinarian Services (3)
Shipping	Passive Read Projects

Idaho NAIS

Integrated Animal Industry System

IDAHO

