



# *Sheep EID*

*Cindy Wolf, DVM*

*Eileen Kuhlmann*

*University of Minnesota*



# *Project Outline*

- ✧ Seed stock flock
- ✧ Study of all components
  - ✧ User Friendliness
  - ✧ Ruggedness
  - ✧ Electronic ID (ear tags)
    - ✧ Retention
    - ✧ Infection/Reactivity
    - ✧ Readability

# *Project outline* (continued)

## ✧ Testing

### ✧ Electronic ID - Ear tags

- ✧ Retention

- ✧ Readability

- ✧ Reactivity v. Infection

### ✧ Readers

- ✧ User Friendliness

- ✧ Ruggedness

### ✧ Data collection devices

- ✧ Ruggedized

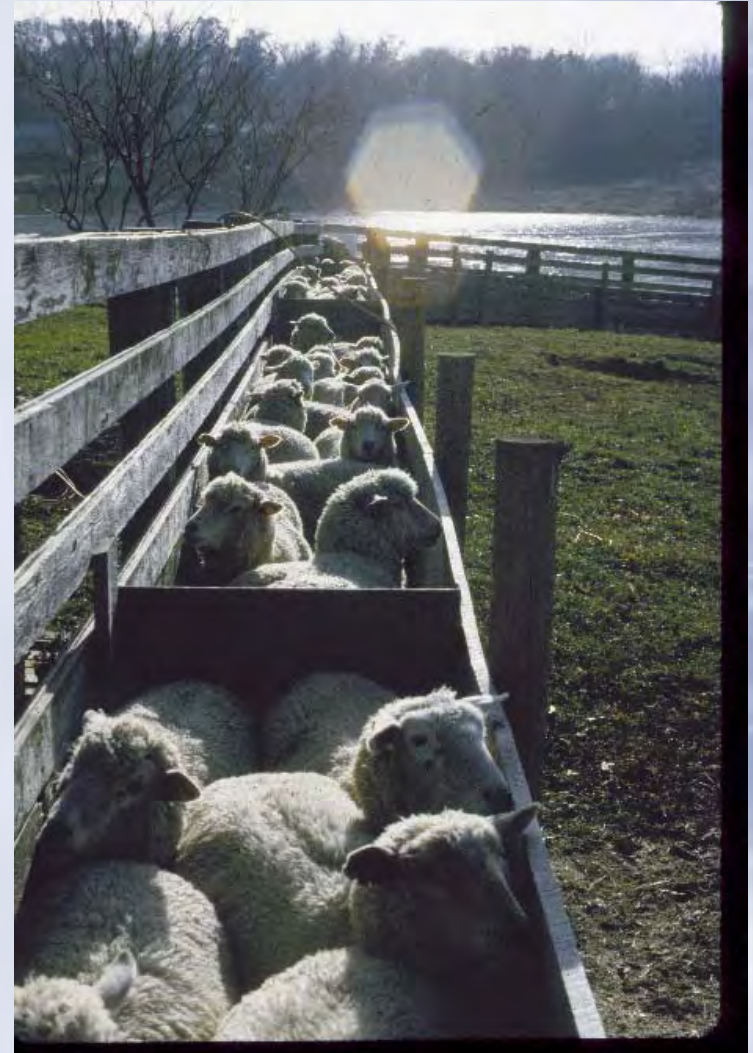
- ✧ Hands free

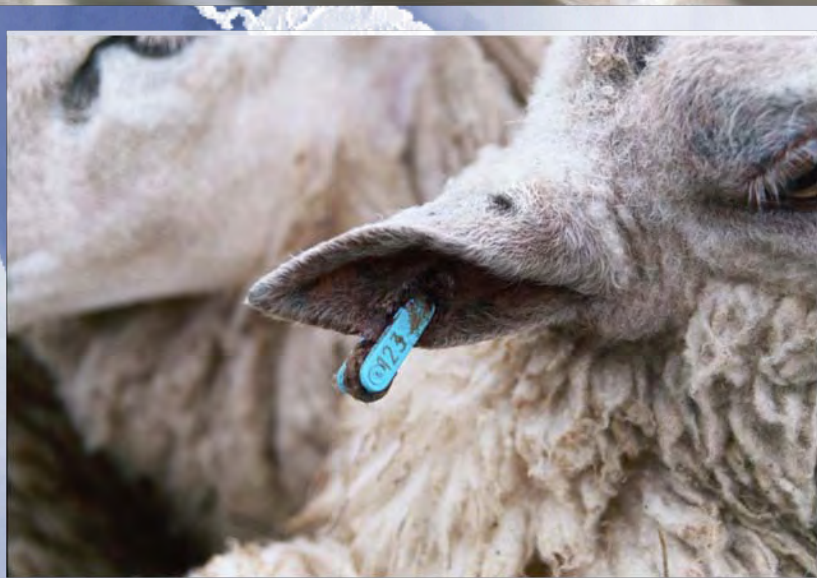
- ✧ Reliable 24/7

- ✧ Easy to operate

# *Plan*

- ✧ Tag & scan lambs close to birth
- ✧ Tag & scan ewes around lambing time
- ✧ Scan lambs when normally worked-  
vax/deworm, wean & weigh, deworm, Post-wean. weigh & u/s
- ✧ Scan ewes when deworm, cull, sort breeding groups







# *Challenges Faced with Sheep*

## ❖ Body Characteristics

### ❖ Ears

- ❖ Thinner than cattle
- ❖ More prone to infection

### ❖ Smaller

- ❖ than cattle
- ❖ most swine
- ❖ Other livestock species

## ❖ Behavior

- ❖ Flock together
- ❖ Head down
- ❖ Sensitive Ears



# *Preliminary Findings*

- ✧ Tag application challenges
- ✧ Significant infection rate
- ✧ Cabled wand readers v. Bluetooth wand readers
- ✧ Tarp Reader problematic
- ✧ Bluetooth dedicated computer-costly but farm-friendly and reliable!
- ✧ Sheep Database



# *Tag Application*

- ✧ Applicator
- ✧ Stem strength (ambient temperature, ear thickness)
- ✧ Inert material
- ✧ Education regarding site and extras (disinfectant, other tags, tattoos)
- ✧ Evaluate in wet v. dry sheep, other weather parameters when tagging and post-tagging



# *Plan*

- ❖ Data analysis will be completed when year 1 complete 11/1/05
- ❖ Test EID devices and wand readers
- ❖ Test mechanized reader/sorter aimed at markets and large producers (to be used in multiple sites)
- ❖ Software testing incl. development of event reports

The background of the slide is a light blue gradient with a faint grid pattern. On the left side, there is a partial view of the Earth from space, showing the Americas in white and blue oceans.

<http://www.sheepandgoatid.org>

- ✧ A site to share information regarding sheep and goat identification developments
- ✧ Anyone from the group is welcome to send materials and ideas to [andrew@sunriseag.net](mailto:andrew@sunriseag.net)