

National Animal Identification System (NAIS)

ID•INFO
EXPO 2005

NAIS Overview

Neil Hammerschmidt, NAIS Coordinator





December 27, 2003

***Agriculture Secretary announced
USDA would implement a national
animal identification system***



April 27, 2004

Agriculture Secretary announced that \$18.8 million would be transferred from the USDA Commodity Credit Corporation (CCC) to provide initial funding for the program during FY 2004.



April 27, 2003

Agriculture Secretary announced that

**... the “official” beginning of
the National Animal
Identification System (NAIS)**



Why does USDA want Animal ID?

To establish the information system necessary to support our animal disease control, eradication, monitoring and surveillance programs.

...animal health is the focus!



What does Animal ID provide?

- ❑ **More timely response!**
 - ◆ Critical to be able to trace animals quickly to control spread of disease
- ❑ **Minimize detrimental effects of disease outbreak**
 - ◆ Less economic loss



Goal

The goal of the NAIS is to have the capability to identify all premises and animals that had direct contact a disease of concern within 48 hours after discovery.



***“National ID” is all about...
standards!***



Nov. 2004 – CFR: Interim Rule “Use of Alternative Numbering Systems”

The USAIP identified four key data elements for standardization:

- A uniform premises identification system;
- A uniform and nationally recognized individual animal numbering system;
- A uniform and nationally recognized numbering system for groups or lots of animals; and
- A uniform numbering system for non-producer participants (such as tag distributors, animal health officials, labs, etc).





How will the system work?

The NAIS will be established over time through the integration of these key components:

- Premises Registration
- Animal Identification
- Animal Tracking



Premises Registration



Premises Registration

❑ Foundation of the system

- ◆ Unique ID for all locations that manage or hold livestock

- Farms/ranches, markets, fairs/exhibitions, public sales, etc.

❑ Provides ability to:

- ◆ Locate subject animal(s)
- ◆ Locate other potentially exposed animals



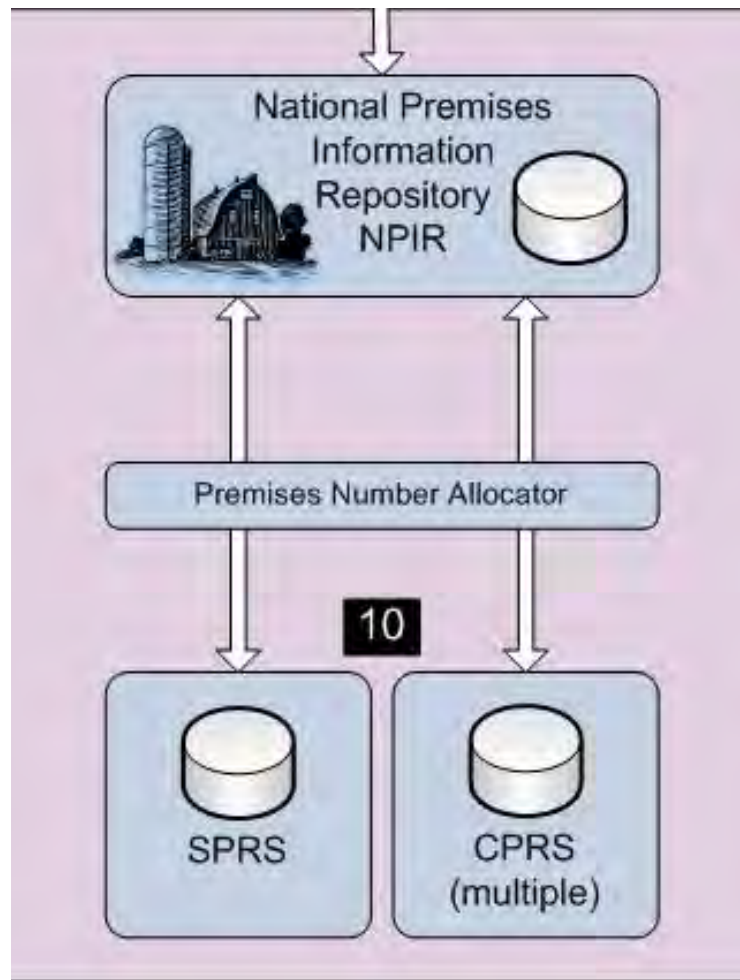
Premises Registration

- ❑ Premises Identification Number (PIN)
 - ◆ Nationally unique number
 - ◆ The number has no meaning
 - ◆ Example: 02345Y7
 - 7 Characters



Premises Registration

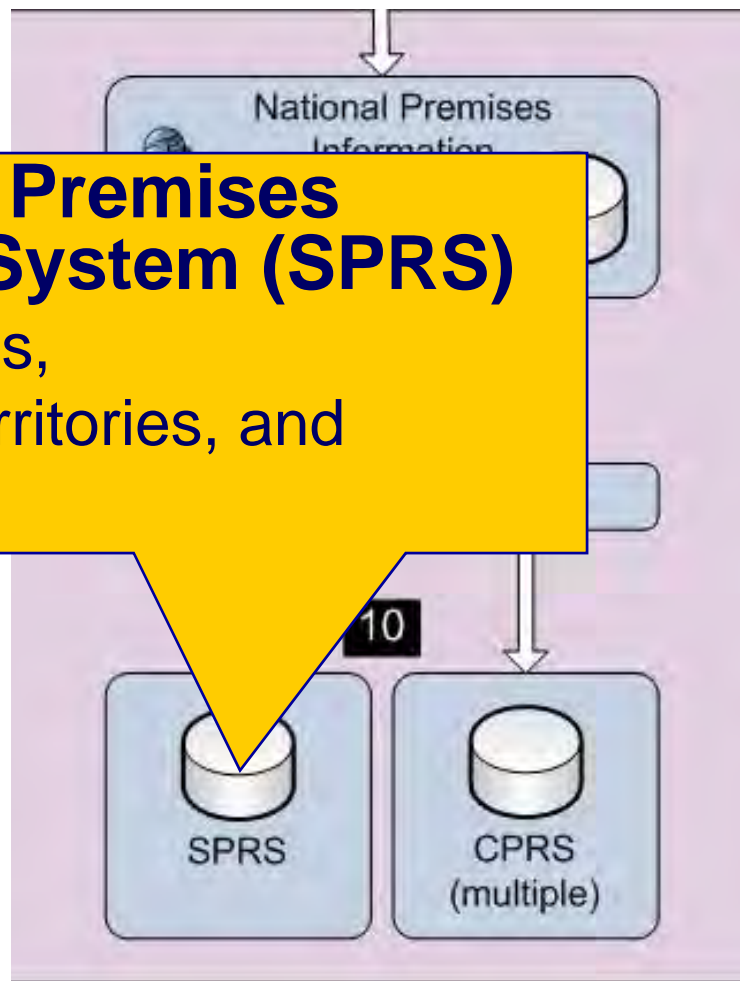
- Premises Identification Number (PIN)
 - ◆ States/Tribes responsible for the administration of premises registration

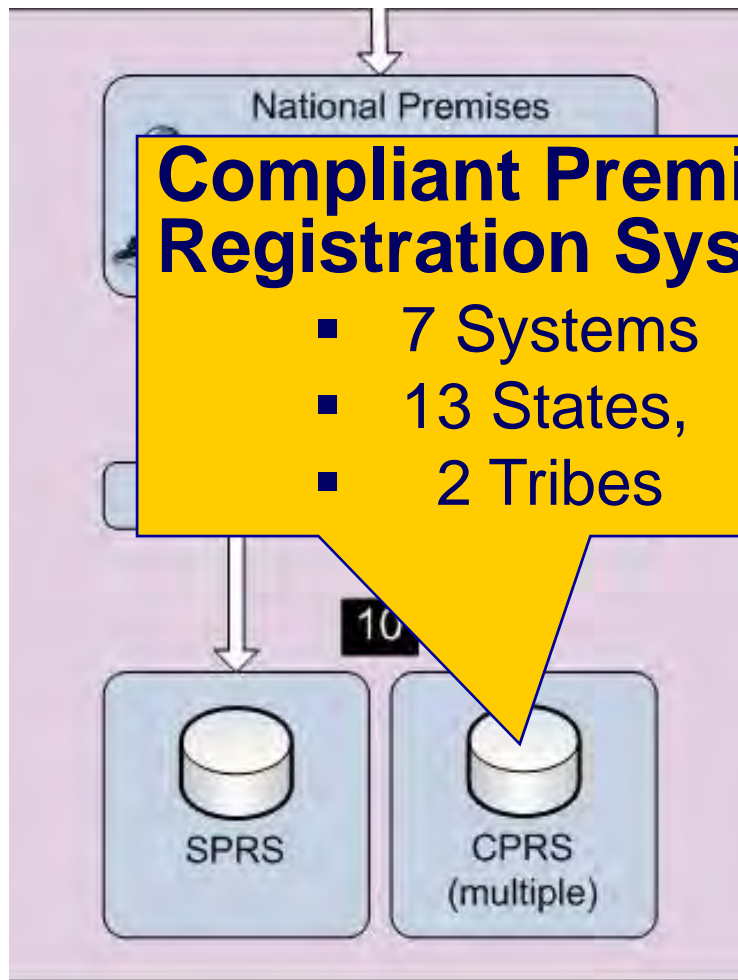




Standardized Premises Registration System (SPRS)

- 37 States,
- 2 US Territories, and
- 3 Tribes







Animal Identification



Animal Identification

- Unique Group/Lot Identification



Group/Lot Identification Number

- Premises ID number
- Date the group was created

Example: A23T567 103002



Animal Identification

- Unique Individual Animal Identification



Animal Identification Number

- Country Code (3 numeric) 840 = USA
- 12 digit animal number

Example: 840 002 134 567 892



Animal Identification

- ❑ USDA is “technology neutral”.
- ❑ So how are official ID tags with the “840” number determined?
 - ◆ Technologies/methods recommendations from Species WG/NAIS Subcommittee
 - ◆ Authorized use of the “840” by USDA APHIS



AIN/RF Tags - Cattle

- ❑ Cattle industry recommends ISO 11784 and 11785 compliant radio frequency identification ear tags
- ❑ RF/AIN Tags have 15-digit code printed on the tags
- ❑ Meets minimum requirements
 - ◆ Tamper evident
 - ◆ Number printed on the tag



**840 will replace 982
when AIN
implemented**



Animal Identification

- How will producers obtain “840” ID tags?



AIN Management System

Web-based

National Animal Identification System - Microsoft Internet Explorer

File Edit View Favorites Tools Help

Back Forward Stop Refresh Home Search Favorites

Address http://nais.aphis.usda.gov/ainmngt/processLogin.do

Adobe Y! Search Web Mail My Yahoo! Games Personals HotJobs Music

USDA United States Department of Agriculture
Animal and Plant Health Inspection Service

NATIONAL ANIMAL IDENTIFICATION SYSTEM

User Info
Neil Hammerschmidt
Change Personal Info

Public Tools
List ID Devices

Action Items
Validate PIN/NPN
Request AIN Allocation
Report AIN Shipment
Fix AIN Broken Events
Report AIN Returns

Optional Tasks
Manage AIN Package
Report AIN Distribution

Resource Info
Current AIN Holdings
Lookup AIN History

You are here: AIN Management

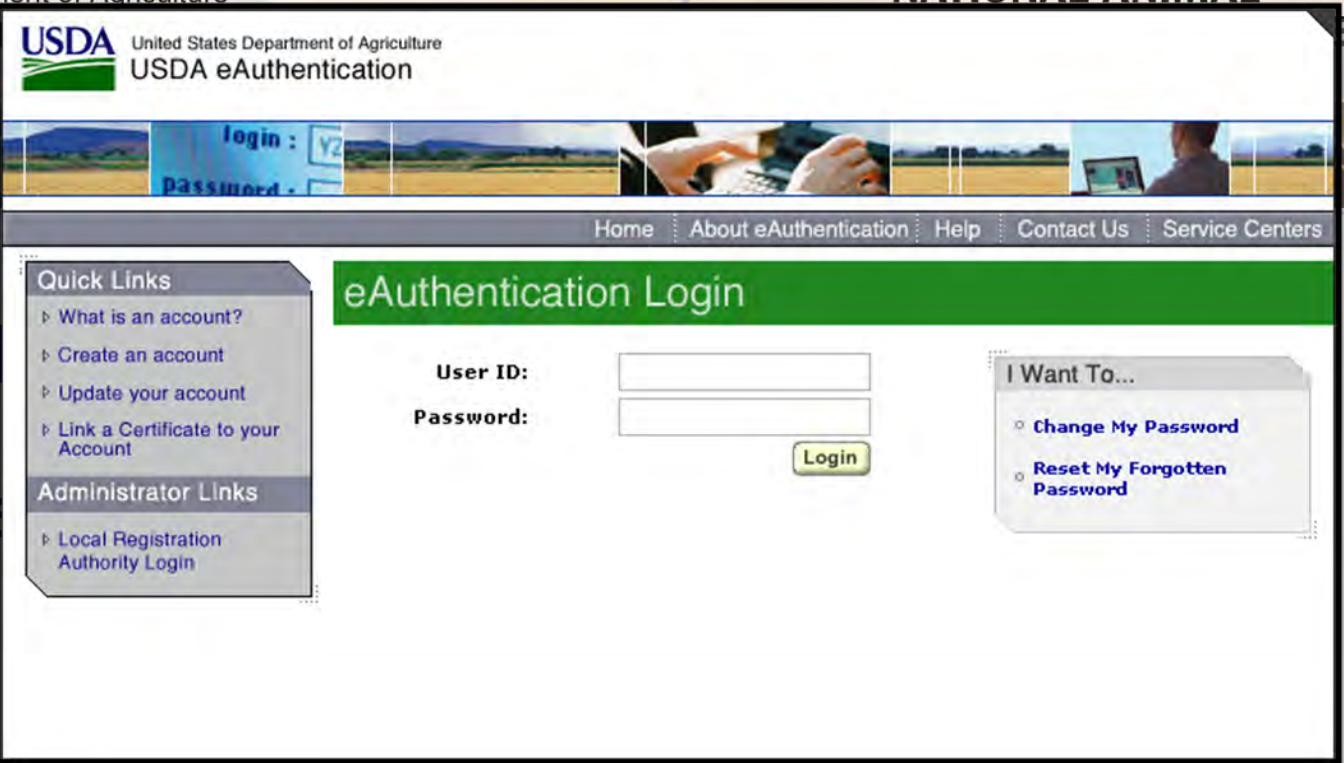
The **National Animal Identification System (NAIS)** is a national program intended to identify specific animals in the United States and record their movement over their lifespans. It is being developed by the U.S. Department of Agriculture (USDA) and State agencies - in cooperation with industry - to enable 48-hour traceback of the movements of any diseased or exposed animal. This will help to ensure rapid disease containment and maximum protection of America's animals.

Version 1.1



AIN Management System

- Web-based
- Public “Area”
 - ◆ Listing of authorized ID devices
- Authorized Users
 - ◆ Tag Manufacturers
 - ◆ Tag Managers
 - ◆ Tag Resellers
 - ◆ State/federal animal health authorities



AIN Man

□ Web-based

□ Public

◆ Listing

□ Authorized Users

◆ Tag Manufacturers

◆ Tag Managers

◆ Tag Resellers

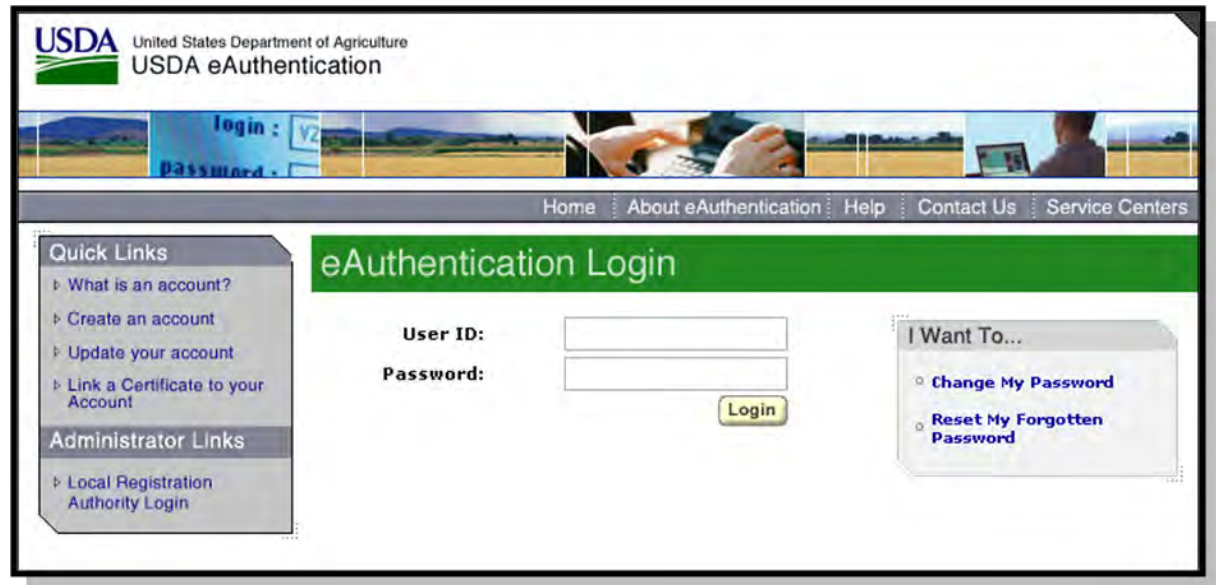
◆ State/federal animal health authorities

Requires Level 2 eAuthentication



eAuthentication

- an identity verification system used by the USDA to provide a single authorization for multiple USDA accounts.



<http://www.eauth.egov.usda.gov>



AIN Management System

□ Distribution of AIN/RF Tags

- ◆ USDA Allocates AINs to authorized Tag Manufacturers
- ◆ Producers obtain tags from:
 - AIN Tag Managers
 - AIN Tag Resellers

An entity authorized by APHIS to distribute AIN Tags to a premises.

- Has a marketing agreement with an approved AIN Tag Manufacturer.
- Agrees to validate premises # of tag recipient
- Reports distribution of the AINs

◆ Uses AINs to authorized Tag
Manufacturers

- ◆ Producers obtain tags from:
 - - AIN Tag Managers
 - - AIN Tag Reseller

Who are AIN Tag Managers?

- Private companies & service providers
- States/Tribes, AVIC offices
- Breed registries, NDHIA
- Veterinarians

Note: AIN Tag Manufacturers may also be AIN Tag Managers

- ◆ Producers obtain tags from:
 - - AIN Tag Managers
 - - AIN Tag Reseller



Animal Tracking



Animal Tracking

Must provide information for:

Trace back

- ◆ To find source of infection
- ◆ To find additional exposed animals

Trace forward

- ◆ To find where exposed animals may have been moved to.
- ◆ To determine additional exposed animals.



Animal Tracking

- What information is needed
 - ◆ ***...just enough to initiate traceback/trace forward***
 - Animal Identification Number
 - Premises Number
 - Date
 - Event



Animal Number - 840 834 502 584 384

Date	PIN	Event Code
07-12-03	A23L449	1 - Tag Shipped to premises
03-15-04	A23L449	2 – Tag Applied
10-15-04	A23L449	4 – Moved Out
10-16-04	SB3T552	3 – Moved In
05-04-05	SB3T552	4 – Moved Out
05-04-05	5245G3D	3 – Moved In
05-05-05	442DW31	10 - Slaughtered



Animal Tracking

- ❑ Collecting animal movement data
 - ◆ Most challenging task
 - ◆ Ability to achieve 48-hour traceback hinges on completeness of animal movement data
 - ◆ Must automate collection of animal ID



Animal Tracking

- ✓ **“Point of Origin” ID**

Achieved with the allocation of the ID Tag to a Premises and recording the allocation.



Animal Tracking

- ❑ Build data collection infrastructure overtime
 - ✓ **Interstate Movements**

**Electronic Interstate Certificate
of Veterinary Inspection (ICVI)**



Animal Tracking

- Build data collection
 - ✓ Interstate Movement
 - ✓ Termination
(Slaughter Plants)





Animal Tracking

- ❑ Build data structure overtime
- ✓ Inter
- ✓ Terr
- ✓ High Concentration Points
 - Markets, etc.
 - Feedlots

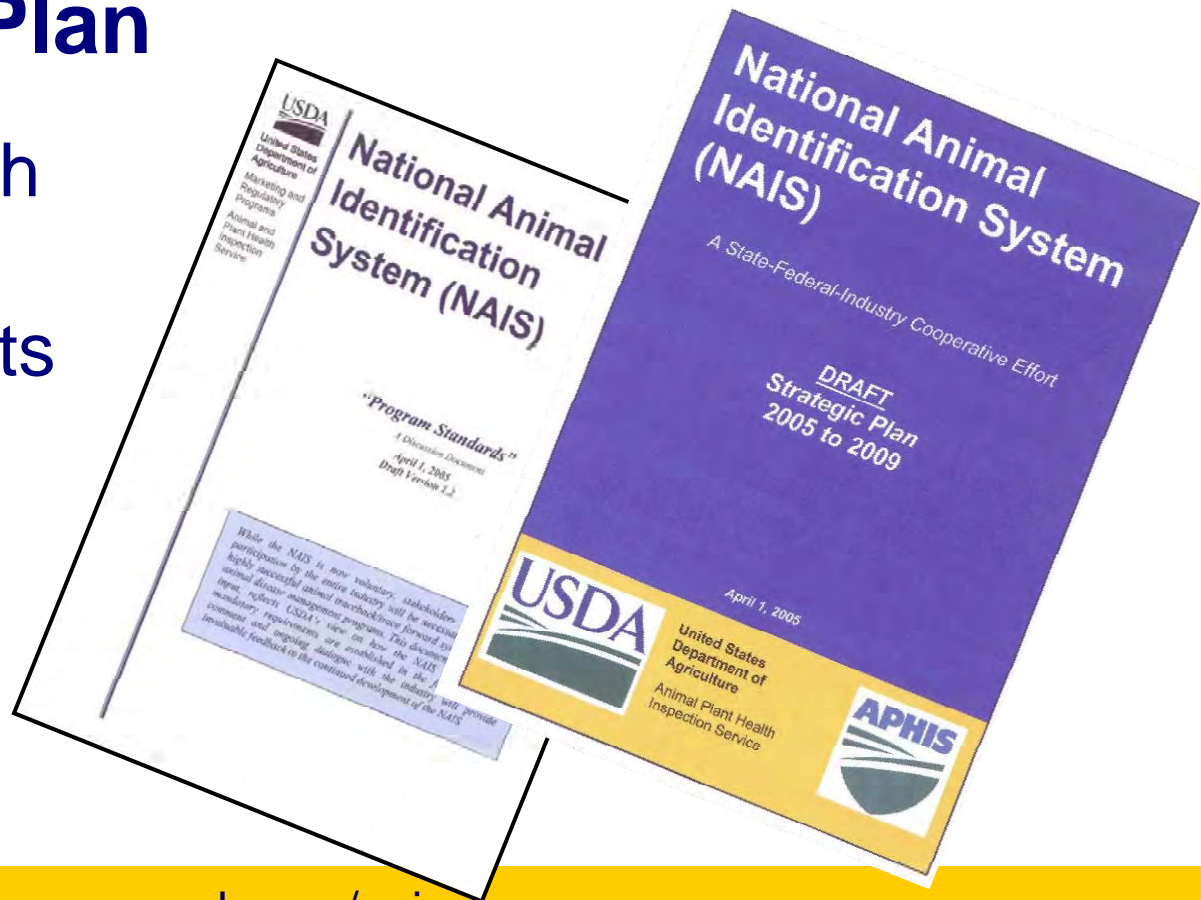
structure overtime





□ DRAFT Program Standards and Strategic Plan

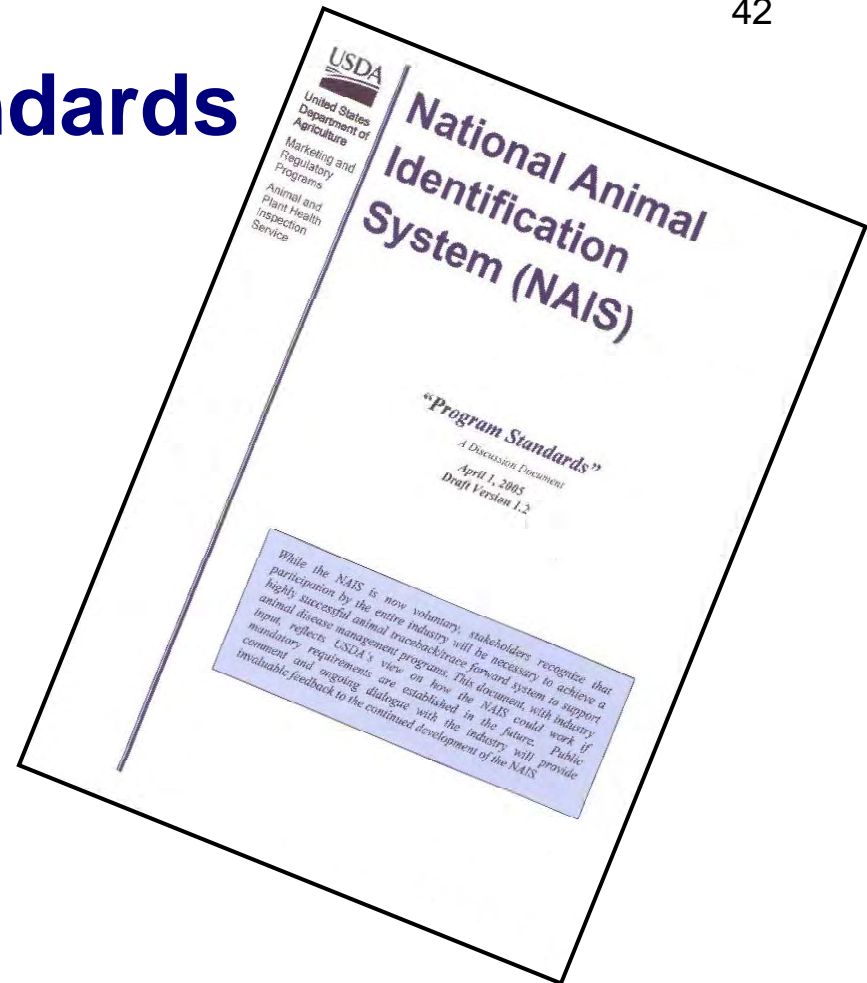
- ◆ Developed through 2 plus years of collaborative efforts
- ◆ Published May 6
- ◆ Approx 600 comments reviewed





□ DRAFT Program Standards

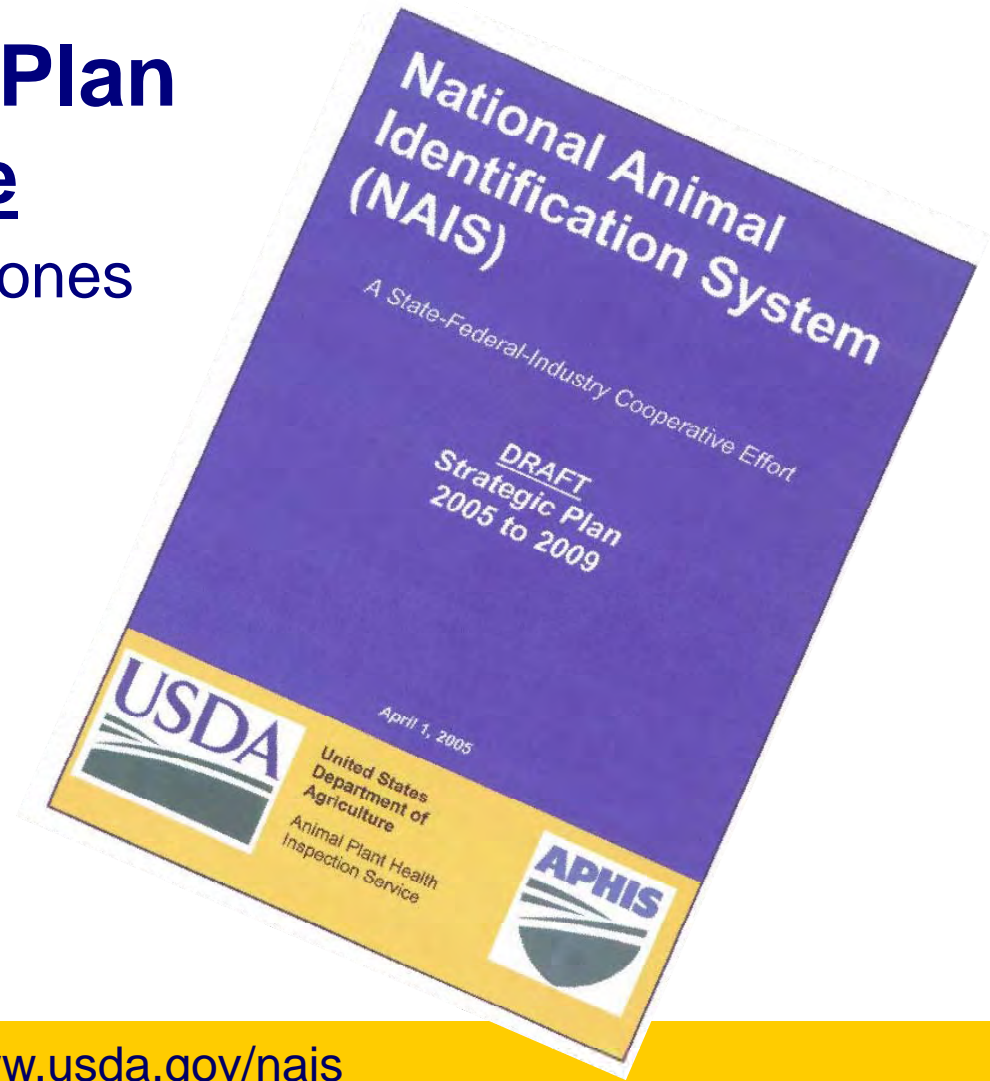
- ◆ How the NAIS will work
- ◆ A “Work in Progress” document
 - Continual updates as Species WGs provide additional details



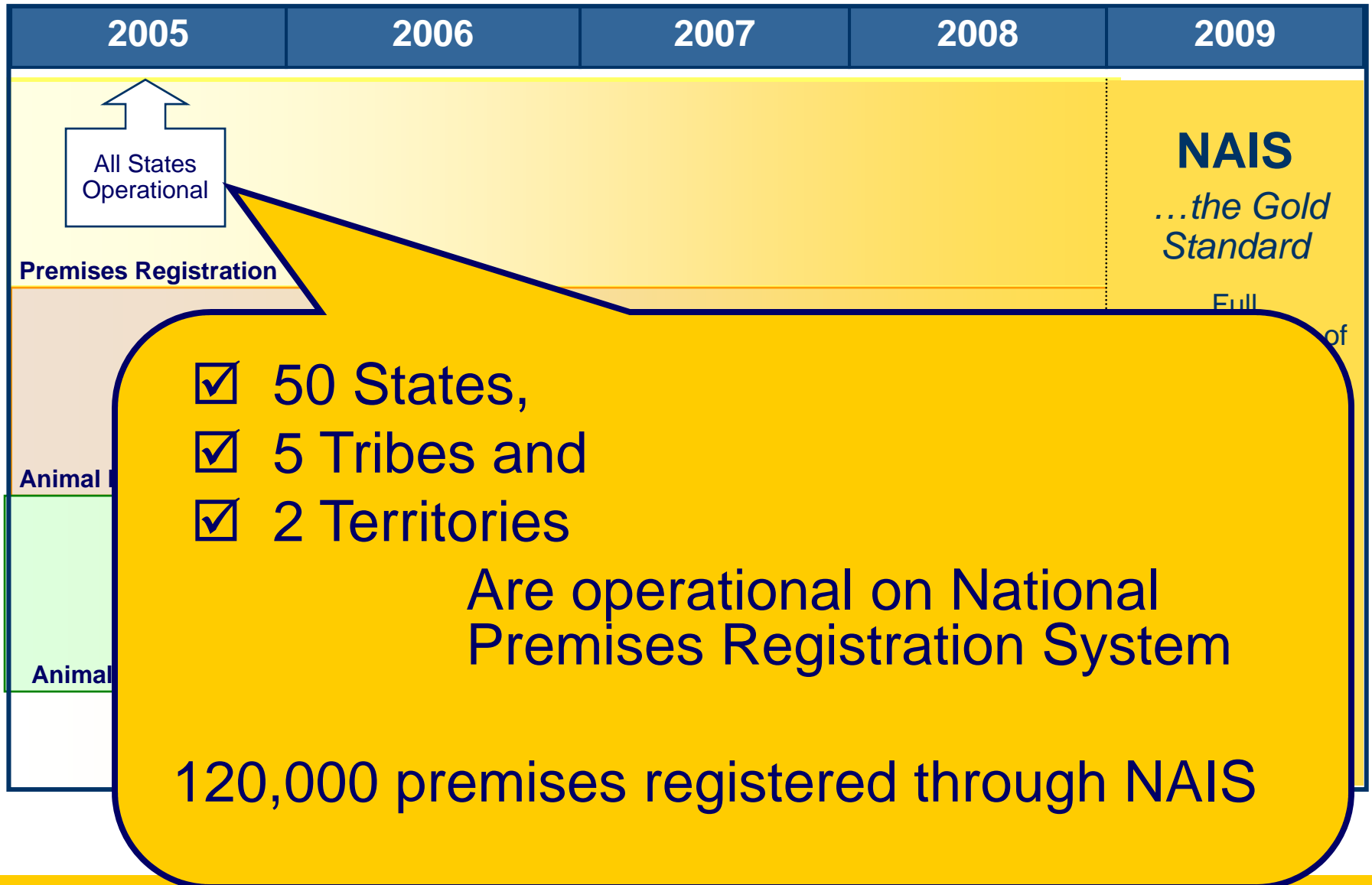


□ **DRAFT Strategic Plan**

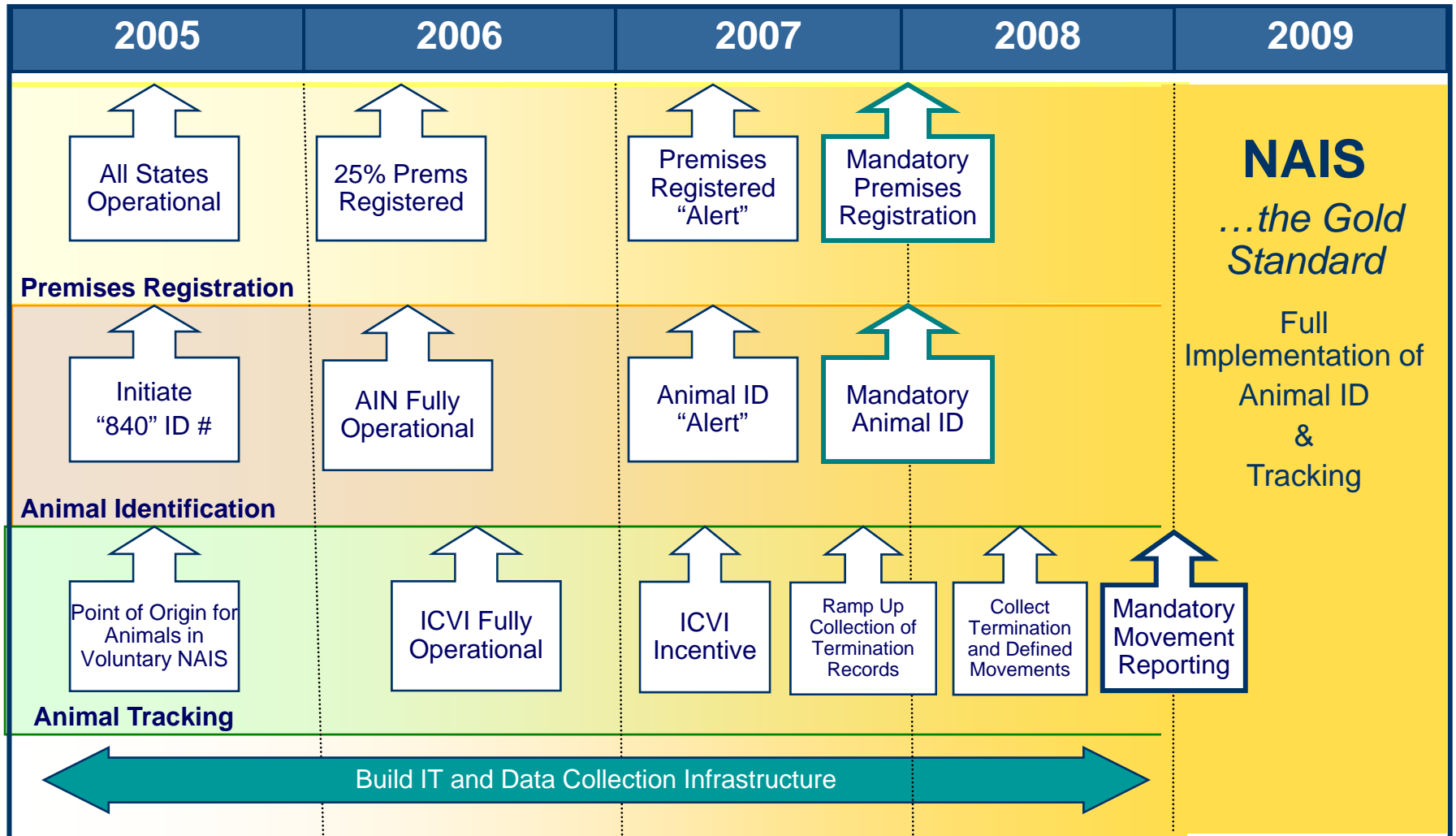
- ◆ Focus on the **future**
 - Identifies key milestones
- ◆ Provides **timelines**
 - 2005 - 2009



NAIS Timeline



NAIS Timeline





Funding

- ❑ Cost sharing: State-Federal-Industry
- ❑ April 2004
 - ◆ \$18.8M Commodity Credit Corporation
- ❑ FY 2005 and FY 2006
 - ◆ \$33M



Confidentiality

- ❑ **USDA committed to working with Congress to protect producer information**



How do I get started?

- Register your premises
- Obtain AIN Tags from an AIN Manager
- Attached tags when most practical for your management system



National Animal ID

- ... essential to protect animal agriculture!*
- ... greatest benefit – MARKET ACCESS!*
- ... opportunities for industry to build upon NAIS infrastructure!*



National Animal ID

... an enormous undertaking that can only be successful with an industry/government partnership!

Thank You!

