

# The Key To Success: One Traceability System For All Livestock

Linda Marchand  
Director General  
Agri-Traçabilité Québec

Chicago  
September 2005



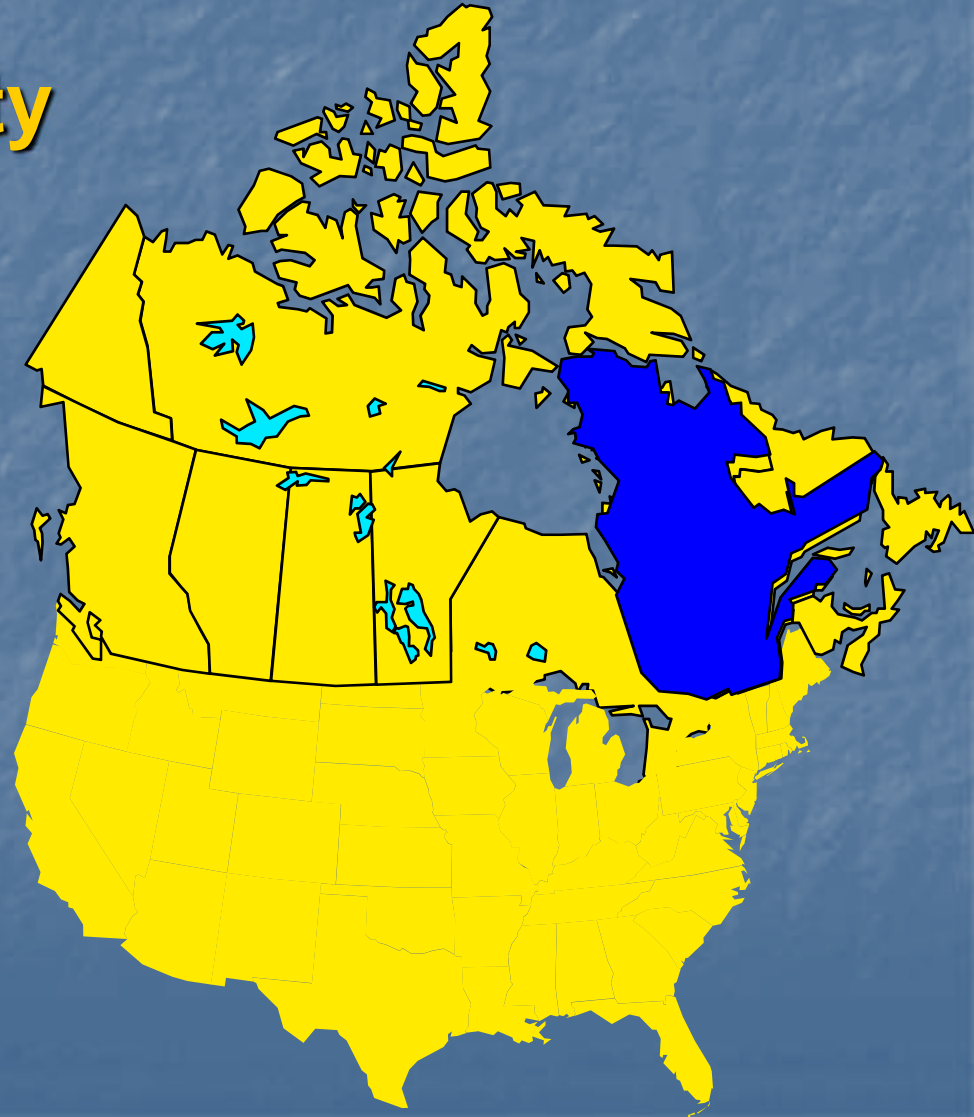
# Background

- Creation of Agri-Traçabilité Québec (ATQ)
- 2001-2005 Action plan

# The Quebec Traceability System

- Traceability tools
- New developments

# Key elements





## Agri-Traçabilité Québec

- Created in September 2001
- A non-profit organization responsible for traceability system management

## Major Responsibilities

- Development, establishment and maintenance of a database
- Provide assistance to stakeholders and follow-up on the reception and validity of data



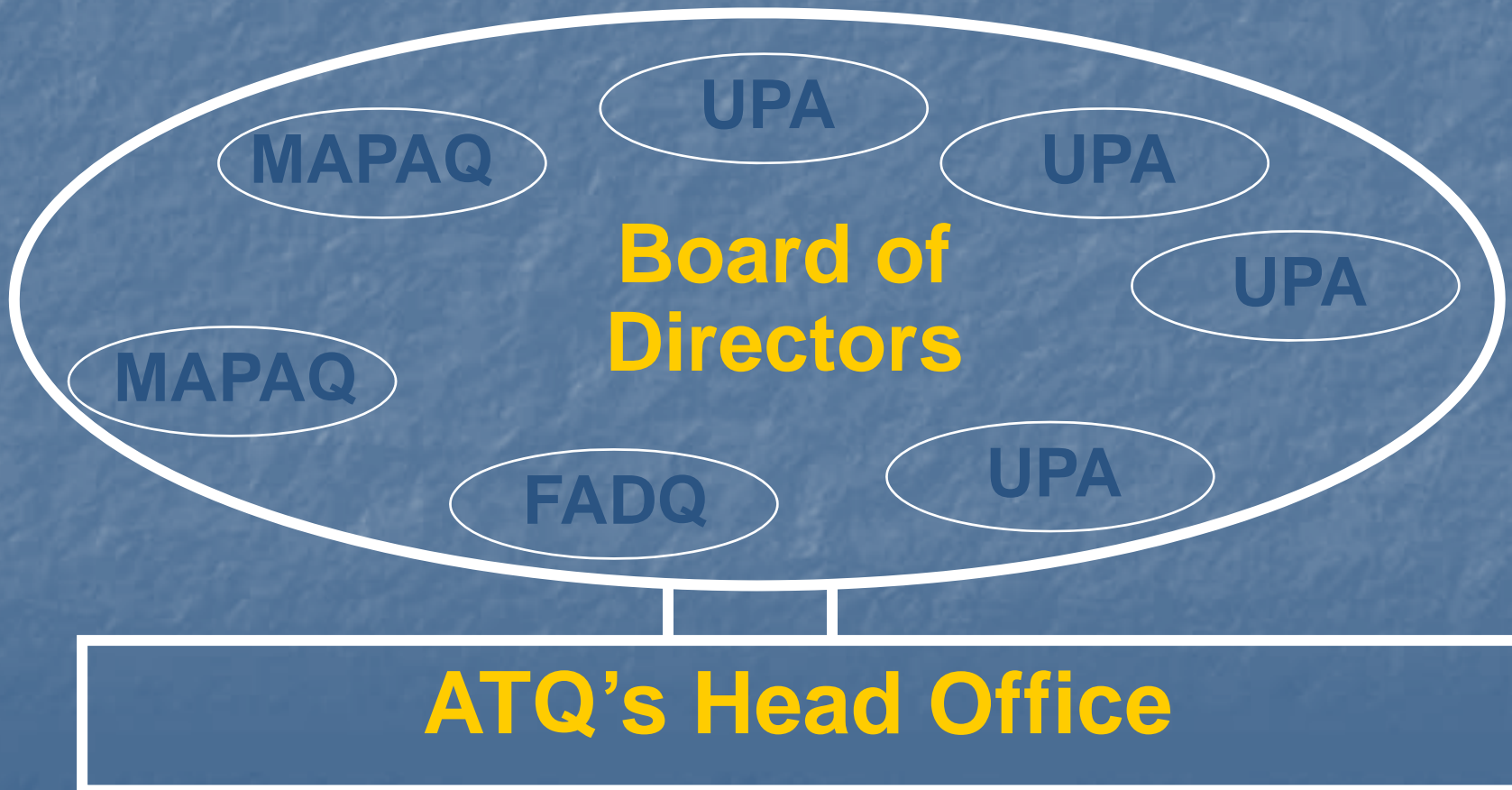
# A collaborative effort: 3 partners



+



+



# ATQ Team



**Development  
and  
Information**



**I.T.**



**Customer  
Service**

# Quebec's vision

- One system and one database for all livestock
- Efficient system able to react rapidly in case of a food safety crisis
- More than identification... traceability!
  - Movements of animals
  - Contacts between animals



# Foundations of Quebec's System

- Mandatory
- Multi-species database
- Identification within days of birth
- Record of all movements



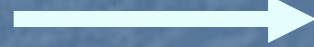
# 2001-2005 Action Plan

- Implement traceability for these sectors
  - Bovine 2002
  - Ovine 2004
  - Swine 2005
- Implement bovine meat traceability from the slaughterhouse to the consumer ... 2005



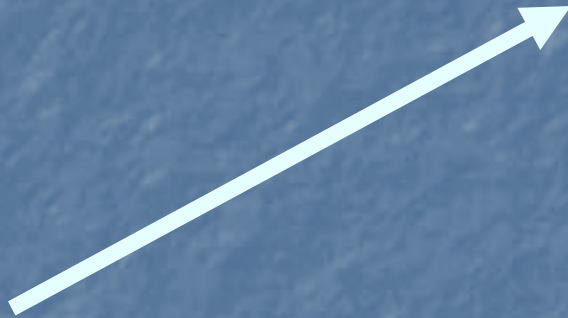
# Traceability Tools

- ◆ Assign a unique number to a single animal or to a group of animals



**ONE DATABASE**

- ◆ Identify premises



- ◆ Record animal movements between various premises



MIRROR



**MAPAQ**

**Vigitr@ce**



# Single Animal ID

- Electronic ID AND Visual panel : security
- Unique 15 digits ISO Number
- One supplier : invitation to tender



# Group Identification

- Assignment of a unique number to a group of animals / products
  - Swine sector
  - Table eggs pilot project
    - Flocks of birds
    - Batches of eggs



# Premises Identification



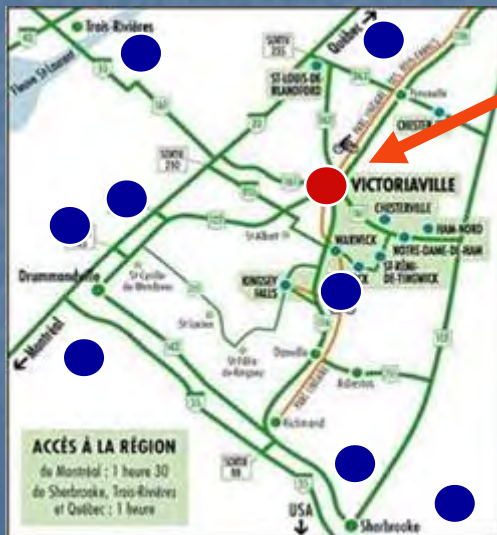
## For all stakeholders :

- Farms
- Pastures
- Auctions
- Slaughterhouses
- Trade fairs
- Sorting centre
- Pathology centre
- Genetic evaluation station
- Zoos, etc.

# Georeferenced Premises



Site number linked to  
a georeferenced  
database



# Record of Animal Movements : Automatic readers in strategic sites



Farm and exhibition sites:  
RFID readers



Slaughterhouse : Bar code and RFID readers



Auction : ISO Panel reader

# Automation



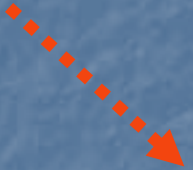
Farm of origin



Smith Farm



Tag activation



TRADE



Johnson Farm



AUCTION



Slaughterhouse



# Quebec's Obligations

## Activation of tags

- Tag number
- Birth date
- Gender of animal
- Location of animal  
(Site number)

## Movements of animals:

Farm  
Fair  
Auction  
Slaughterhouse  
Exportation  
Death

- Stakeholder's site number
- Date animal received
- Site of origin (site number)
- Tag number

ATQ's  
DATABASE

# ATQ's Objectives

- Put in place tools to facilitate the work of producers to meet their obligations
- Validate the information received for the database



# To Facilitate and Validate Declarations

## Information exchange partnerships

65% of producers  
using their services

**PATLQ**

Quebec Dairy Herd Analysis Program

**FADQ**

Quebec Agricultural  
Finance Group

**Holstein  
Canada**

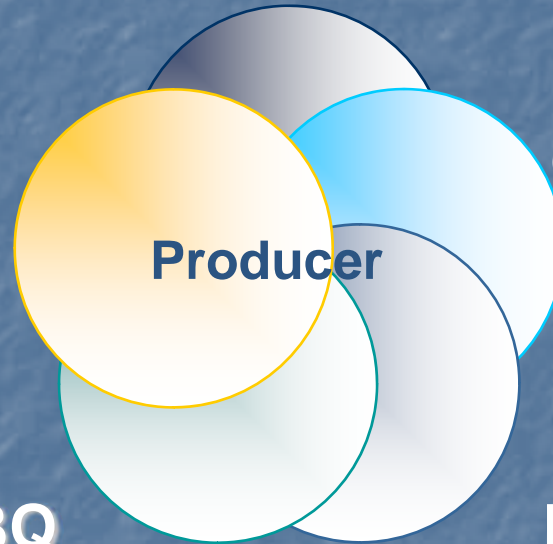
**Producer**

**PATBQ**

Quebec Beef Herd  
Analysis Program

**FPBQ**

Quebec Federation  
of Beef Producers



# Development projects

- Enhancements
  - Automation of stakeholders
  - Portable readers and software (farms & carriers)
  - Management software (Provin, Bovitrace)
- Projects in new sectors
  - Cervids
  - Table eggs
  - Horticultural production



# Database: possible information

- Animal health
- Quarantineing
- Genetics
- Feeding
- Unsupported animals (which are not traced presently)



# Database :

## Practical Applications

- B.S.E. (mad cow disease)
  - Number of animals imported
  - Their origin
- Export agreement and Added value
  - Age of animals
- Crisis simulation
  - Equinox 2005



# Development Plan 2004-2009

- Emphasis on ATQ's consolidation
- Strategic orientations
  - Organization
  - Targeted Productions
  - Financing
  - Business Proposal Planning



# Business Proposal Planning

## ✓ Agri-Trace

- A proven and tested software
- Ease of use, user-friendly interfaces
- System can be adapted (3 packages)
  - Software User License
  - ID Order Management
  - Complete Traceability System



# Key Elements

- Traceability... not just identification
- Importance of having one database for all agricultural sectors
- Efficient system allows rapid reaction in case of a food safety crisis



**Vigitr@ce**





***Thank you !***

***Consult our Website at***

***[www.agri-tracabilite.qc.ca](http://www.agri-tracabilite.qc.ca)***