

The Decatur Beef Alliance – Established in 1994



Mainstream Animal ID Solutions and Practical Applications

Decatur County Feed Yard, LLC



- Located near Oberlin, KS (Northwest)
- 38,000 Head (One time capacity)
- Family Owned
- Owners - Warren and Carol Weibert
- Warren Weibert - General Manager
- Built in 1971



© 2006 Europa Technologies
Image © 2006 TerraMetrics
Image © 2006 NASA

© 2006 Google

Pointer 39°49'44.29" N 100°32'05.99" W

Streaming ||||| 100%

Eye alt 6714.33 mi

Decatur County Feed Yard

The mission of Decatur County Feed Yard, Inc. is to produce consistent, quality beef at the lowest possible cost and provide the highest quality service to our customers, both feeders and packers. We will use all available technology and proven techniques to achieve this mission.

Decatur County Feed Yard

Primary Processor: Cargill Meat Solutions

Primary Plant: Dodge City, KS

Focus: Mainstream Markets

- **Exclusive agreement**
- **No head count guarantees**
- **Base price is 5 area week prior market**
 - **Premiums and discounts**
 - **Experience in data retrieval**

Niche markets/experienced with

- **National Beef**
 - **Natural**
 - **Holsteins**
 - **Commodity**
- **Coleman Natural**
 - **Choice**
- **Creekstone**
 - **100% Black Hided**
 - **Natural**
 - **NHTC**
- **Meyers Natural**
 - **Red or Black Angus**
- **Laura's Lean**
 - **Natural, High Red Meat Yield**
 - **Discount for Choice**

*** No Guarantees on data***

**DECATUR
COUNTY
FEED YARD, INC.**



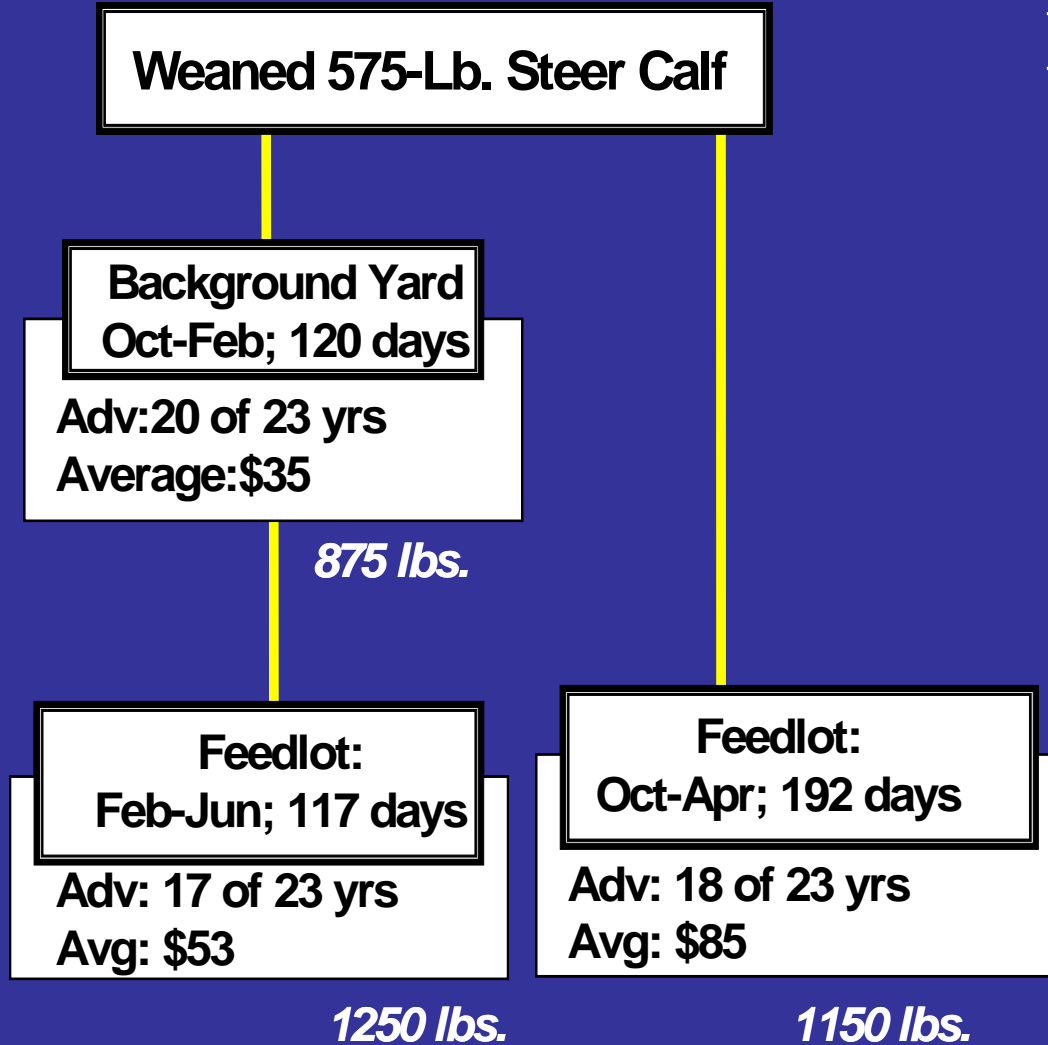
Equity Director
and Public Good Marketing



Retained Ownership at Decatur County Feed Yard

Spring-Born Steer Calves

Direct to the Feedyard



Decatur County Feed Yard Customers Come from All Over the USA



An Emerging Beef Industry...

Our goal is to supply information management tools necessary to support the emerging beef production system at the source -- cow/calf operations.

Our vision is an industry in which demand, food safety and production issues are resolved by sharing critical management information through integrated, profitable, production systems.

The Decatur Beef Alliance

Established in 1994

- **No More Average Management**

INDIVIDUAL ANIMAL PROFIT / LOSS WHEN MARKETING GROUPS ON AN AVERAGE SALE DATE

Arrival

Day 140



Overfinished



Overweight



Fed too long when ICOG exceeds sales price



Not fed long enough to achieve quality grade



Underweight



Not fed long enough when ICOG is less than sales price

INCREASED PROFITABILITY WHEN MARKETING INDIVIDUALS



How do we manage to an

**“A Comprehensive
Endpoint
Identification,**

**ACCU-TRAC®
Data Tracking, and**

**ECM
Individual Animal**

Management System

**PROCESS
Developed by Micro Beef
Technologies**

ACCU-TRAC®

Electronic Cattle Management . . .

- is a proprietary state-of-the-art individual animal, value-based management system facilitating industry-wide supply chain integration and animal traceback.
- The ACCU-TRAC® System, also known as ECM®, encompasses a number of elements for a comprehensive approach toward individual animal management..

- *The ACCU-TRAC® ECM System uses science and advanced technologies to manage cattle individually.*
- *ECM® combines multiple objective measurements*
 - *weight,*
 - *ultrasound*
 - *video imaging*

Optimum individual profit sorting, management, and marketing.

- *This approach extends to the packing plant as well with automated live and carcass identification transfer.*

ECM® components include the following:

- food safety protocols and verification
- individual animal traceback
- individual animal optimum economic end-point marketing
- growth and performance models
- electronic identification ear tags
- nutrition systems
- health systems
- individual animal live and carcass performance data
- physical processing facility for high-speed, low-stress cattle measurement and sorting
- historical database

Over 150 data points
Collected
All Linked to an RFID



ECM[®] MEASUREMENT STATIONS

Sequencing
Station

Video
Imaging

Weigh
Station

Ultrasound
Station

Processing
Chute

1

2

3

4

5

Automatic
individual
animal
sequencing
station

Automatic
measuring
of external
dimensions

Automatic
integrated
electronic
scales

Ultrasound
measurements
of internal
tissue
characteristics

Individual
animal
processing
and sort
selection





Sort Gates

Sort Pens

With Feed Bunks & Waterers

Holding Pens



Decatur County Feed Yard

ECM Facts

11/15/1996 – 08/17/2006

- Number of Animals Through Facility: 453,322 Head
- Total Numbers of Animals Through ECM Facility
(Includes Initial Processing and Final Sort: 1,124,308 Head
- Ave Number of times Individuals Seen in Facility: 2.5
- Number of Breed Codes Identified: 15,011
- Number of Hide Color Codes Identified: 94,979
- Number of Lots Managed: 4,141
- Minimum Number of Head in Lot: 11
- Maximum Number of Head in Lot: 2,894
- Average Number of Head in a Lot: 106
- Number of Packing Plants Cattle Tracked Through: 11
- Used the system to assist in a heifer development program,
Developing over 4,000 head of uniform Bred Heifers



The Decatur Beef Alliance

Established in 1994

- **No More Average Management**
- **No More Average Marketing**

INCREASED PROFITABILITY WHEN MARKETING INDIVIDUALS



The Target

	<u>Yield Grade 1</u>	<u>Yield Grade 2</u>	<u>Yield Grade 3</u>	<u>Yield Grade 4</u>	<u>Yield Grade 5</u>
Prime	\$16.20	\$13.70	\$12.20	\$(4.80)	\$(9.20)
CAB	\$11.20	\$8.70	\$7.20	\$(7.80)	\$(12.80)
Choice	\$7.20	\$4.70	\$3.20	\$(11.80)	\$(16.20)
Select	\$0.80	\$(3.30)	\$(4.80)	\$(19.80)	\$(24.20)
Standard	\$(11.00)	\$(13.50)	\$(15.00)	\$(30.00)	\$(35.00)

550 ← Carcass Weight Range → 1000

*Ch/Sel Spread \$8.00

*60% Choice Grade

The Target

- 0.48 Backfat
- 550 lb Minimum Carcass
- 1000 lb Maximum Carcass
- Maximum age
- Incremental Cost of Gain

2005 STEER CALVES

All Lots

Why They Were Sold!

Back Fat = <u>.48</u>"	80%
Incremental Cost of Gain	2%
Minimum Carcass Weight	6%
Maximum Carcass Weight	12%

The Decatur Beef Alliance

Established in 1994

- **No More Average Management**
- **No More Average Marketing**
- **No More Secrets**

DECATUR BEEF ALLIANCE

RR 3 BOX 9 OBERLIN KS 67749 (785) 475-2212, FAX #: (785) 475-2717

LOT CLOSEOUT SUMMARY

LOT: 4441 HF

7/11/2005

GENERAL:

DATE RECEIVED: 11/10/2004
 HEAD RECEIVED: 136
 PAY WEIGHT: 526
 COST OF FEEDERS: \$116.30
 HEAD SOLD: 134
 AVG SALE DATE: 5/12/05
 AVG SALE WEIGHT: 1087

PERFORMANCE:

ADG: 3.02
 FE(DRY): 5.50
 TOTAL DEADS: 2
 DEATH LOSS%: 1.47
 DOF: 183

EXPENSES:

TREAT: \$727.79
 PROCESSING: \$957.38
 YARDAGE: \$1,228.45
 FEED: \$34,732.14
 COST OF GAIN: \$50.75
 OTHER: \$1,358.33

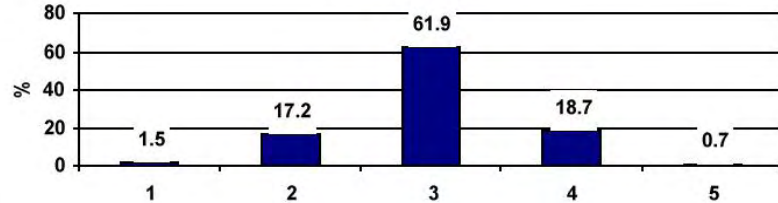
RETURN:

TOTAL SALES: \$136,322.40
 /CWT: \$93.58
 TOTAL NR: \$14,174.28
 NR/HEAD: \$105.78

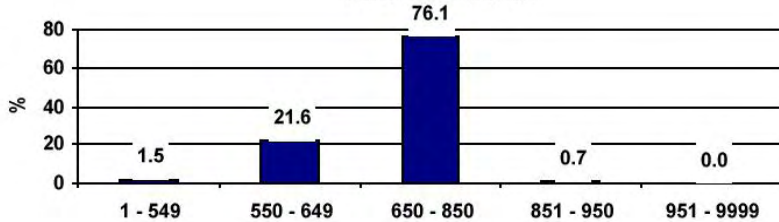
Quality Grade Distribution



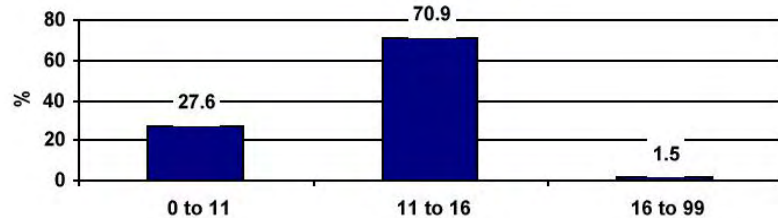
Yield Grade Distribution



HCW Distribution



REA Distribution



4441

134 H

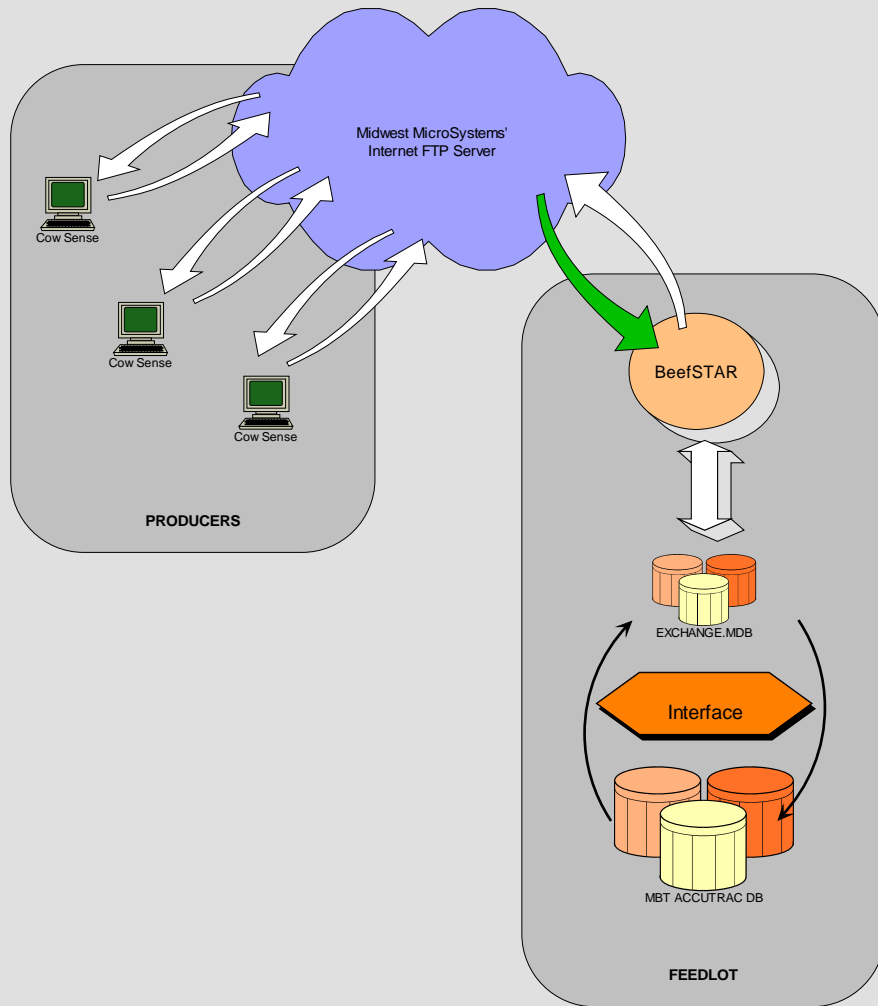
RID	VID	NR/HD	TCOG	PROC	OTHER	TREAT	CCST	FRAME	LARWT	CLWT	DOFF	OEDM	ADG	FE	QG	YG	REA	REQ	REA	HCW	C/CWT	L/CWT	DATEF	ACV	ADJ
	66360	-128.00	66.00	6.91	8.94	44.41	615	5.9	528	942.00	141.00	BF	2.93	5.99	3	3.00	8.9	10.40	547.00	139.15	80.80	3/31/2005	-36.00	-341.00	
Y 4 104	66375	-7.00	61.00	6.9	9.68	12.18	658	5.7	574	1036.00	169.00	BF	2.73	6.26	2	4.00	9.8	11.40	634.00	147.05	89.99	4/28/2005	-12.00	-269.00	
O 295	66379	-113.00	68.00	7.52	11.37	12.78	620	6.8	533	949.00	232.00	BF	1.79	6.56	3	3.00	11	11.20	620.00	127.51	83.30	6/30/2005	-7.00	-251.00	
Y 84 83	66380	99.00	55.00	6.9	9.68	0	659	6.3	575	1137.00	169.00	BF	3.32	6.07	3	4.00	12.3	12.50	728.00	147.05	94.15	4/28/2005	-13.00	-246.00	
O74	59357	61.00	49.00	6.77	9.68	0	636	4.9	551	1087.00	169.00	BF	3.17	5.31	2	5.00	9	12.50	729.00	132.05	88.56	4/28/2005	-123.00	-240.00	
NT	59367	-53.00	58.00	6.91	8.94	11.58	627	5.5	541	926.00	141.00	BF	2.73	5.95	3	3.00	9.3	10.50	562.00	142.14	86.27	3/31/2005	-20.00	-233.00	
O 30	66359	-44.00	62.00	6.92	8.94	0	646	4.8	561	933.00	141.00	BF	2.64	6.68	20	3.00	11.6	10.40	552.00	150.65	89.13	3/31/2005	28.00	-232.00	
O92	59334	40.00	58.00	6.9	9.68	11.58	648	5.3	563	1044.00	169.00	BF	2.85	5.99	2	4.00	11.5	11.70	658.00	147.05	92.68	4/28/2005	-12.00	-232.00	
O62	59339	128.00	56.00	6.77	10.37	0	704	7.7	626	1271.00	195.00	BF	3.31	6.07	3	4.00	13	14.20	863.00	138.54	94.07	5/24/2005	-20.00	-224.00	
O 268	66417	112.00	53.00	6.77	9.68	0	657	6.5	573	1086.00	169.00	BF	3.03	5.71	3	4.00	11.4	12.30	708.00	147.05	95.87	4/28/2005	-13.00	-224.00	
O 188	66366	73.00	56.00	6.9	9.68	0	692	7.6	612	1125.00	169.00	BF	3.04	6.08	2	4.00	9.6	12.40	716.00	147.05	93.59	4/28/2005	-13.00	-223.00	
O 279	66365	-24.00	64.00	6.92	8.94	29.73	639	5.5	554	925.00	141.00	BF	2.63	6.02	2	3.00	12.8	10.70	573.00	149.15	92.39	3/31/2005	20.00	-221.00	
P700	59349	-179.00	65.00	7.56	11.37	0	573	6.8	486	880.00	232.00	BF	1.70	6.49	5	2.00	12.7	10.30	543.00	119.94	74.01	6/30/2005	-47.00	-217.00	
O41	66405	79.00	56.00	6.77	9.68	20.52	638	5.8	553	1108.00	169.00	BF	3.29	5.69	2	4.00	9.4	12.20	700.00	147.05	92.90	4/28/2005	-13.00	-210.00	
	66367	119.00	51.00	6.9	9.68	0	593	5.1	506	1094.00	169.00	BF	3.48	5.56	3	4.00	10.7	12.10	689.00	147.05	92.61	4/28/2005	-13.00	-208.00	
O 87	66363	-15.00	63.00	6.92	8.94	12.78	620	4.9	533	927.00	141.00	BF	2.79	6.49	2	2.00	10.5	10.50	557.00	153.15	92.02	3/31/2005	42.00	-208.00	
O207	66399	-13.00	55.00	7.44	10.08	10.37	539	3.9	451	964.00	184.00	BF	2.79	5.55	2	4.00	8.7	10.60	569.00	141.73	83.66	5/13/2005	-11.00	-208.00	
O75	66415	-25.00	57.00	7.44	10.08	16.51	584	6.3	496	1081.00	184.00	BF	3.18	5.81	3	3.00	12	11.70	660.00	135.2	82.55	5/13/2005	-55.00	-207.00	
O 5	66350	98.00	55.00	6.77	9.68	0	664	5.5	580	1117.00	169.00	BF	3.18	6.02	2	4.00	8.9	12.40	720.00	147.05	94.79	4/28/2005	-13.00	-200.00	
W70	66411	-4.00	55.00	6.92	8.94	0	649	6	565	945.00	141.00	BF	2.69	5.92	3	2.00	10.7	10.80	586.00	146.14	90.62	3/31/2005	3.00	-191.00	
O 180	66358	12.00	57.00	6.91	10.08	0	676	6.7	595	1106.00	184.00	BF	2.78	6.08	3	3.00	12	12.50	725.00	135.2	88.63	5/13/2005	-61.00	-187.00	
O206	59356	13.00	57.00	6.91	8.94	0	621	5.2	534	916.00	141.00	BF	2.71	6.13	2	3.00	11.5	10.70	571.00	149.15	92.97	3/31/2005	20.00	-184.00	
O256	59328	15.00	47.00	7.44	9.68	0	588	6	500	1009.00	169.00	BF	3.01	5.01	4		11.6	11.40	631.00	133.71	83.62	4/28/2005	-96.00	-181.00	
O260	66394	14.00	61.00	7.44	10.08	37.77	642	7.4	557	1087.00	184.00	BF	2.88	5.70	3	2.00	13.6	12.20	703.00	139.2	90.03	5/13/2005	-31.00	-179.00	
O66	59337	109.00	54.00	6.9	9.68	10.37	605	5.6	518	1082.00	169.00	BF	3.34	5.73	2	4.00	11.1	12.10	695.00	147.05	94.45	4/28/2005	-13.00	-179.00	
O 235	59301	111.00	51.00	6.77	9.68	0	637	5.3	552	1083.00	169.00	BF	3.14	5.56	2	4.00	12.7	12.10	695.00	147.05	94.37	4/28/2005	-13.00	-177.00	
Y4 043	66402	38.00	54.00	6.9	9.68	0	640	6.3	555	1068.00	169.00	BF	3.04	5.84	3	3.00	11.3	11.90	679.00	140.71	89.46	4/28/2005	-55.00	-174.00	
NT	66410	31.00	53.00	7.44	9.68	9.77	603	6	516	1059.00	169.00	BF	3.21	5.56	3	3.00	12.3	11.70	657.00	140.71	87.30	4/28/2005	-54.00	-174.00	
O318	66406	62.00	55.00	6.91	10.08	13.39	672	7.5	590	1208.00	184.00	BF	3.36	5.76	9	4.00	11.4	12.90	760.00	141.73	89.17	5/13/2005	-14.00	-172.00	
W74	66387	-20.00	56.00	7.57	10.37	0	563	5.4	475	935.00	195.00	BF	2.36	5.84	3	2.00	12.4	10.80	585.00	137.18	85.83	5/24/2005	-22.00	-168.00	
OR 161	66370	37.00	52.00	7.44	9.68	0	588	6.3	500	1080.00	169.00	BF	3.43	5.63	3	3.00	12.8	11.70	658.00	140.71	85.73	4/28/2005	-54.00	-168.00	
O 164	59305	39.00	50.00	7.44	9.68	11.58	588	6.9	500	1073.00	169.00	BF	3.39	5.19	3	3.00	11.8	11.60	650.00	140.71	85.24	4/28/2005	-53.00	-164.00	
O 25	59320	-6.00	58.00	7.58	11.09	37.62	499	6.2	412	1042.00	222.00	BF	2.84	5.37	3	3.00	13	11.80	664.00	129.06	82.24	6/20/2005	-16.00	-163.00	
O 243	66354	18.00	54.00	7.44	10.08	11.58	550	5.7	462	1017.00	184.00	BF	3.02	5.48	3	3.00	12.1	11.50	641.00	135.2	85.21	5/13/2005	-54.00	-158.00	
O288	66390	101.00	53.00	6.91	10.08	0	631	6.3	546	1177.00	184.00	BF	3.43	5.78	2	4.00	12.8	12.90	755.00	141.73	90.91	5/13/2005	-14.00	-157.00	
O 103	59312	117.00	49.00	6.9	9.68	0	591	5.1	504	1046.00	169.00	BF	3.21	5.27	2	4.00	10.2	11.80	663.00	147.05	93.21	4/28/2005	-12.00	-157.00	
PK 660	66378	20.00	53.00	6.91	10.37	0	611	6.8	524	1071.00	195.00	BF	2.80	5.63	3	3.00	11.8	12.10	693.00	133.18	86.18	5/24/2005	-53.00	-157.00	
O 49	66362	31.00	58.00	7.44	10.08	0	649	5.5	564	977.00	184.00	BF	2.24	6.00	3	3.00	10.7	11.90	679.00	135.2	93.96	5/13/2005	-57.00	-156.00	
O203	66416	72.00	62.00	7.44	10.08	38.17	586	6.6	498	1101.00	184.00	BF	3.28	6.04	2	2.00	11	11.80	664.00	155.73	93.92	5/13/2005	81.00	-155.00	
O 4 282	59310	-36.00	54.00	7.58	11.09	0	551	3.2	463	983.00	222.00	BF	2.34	5.53	2	4.00	9.5	11.50	642.00	124.03	81.00	6/20/2005	-48.00	-155.00	
O 89	59365	-13.00	53.00	7.56	11.37	22.4	521	6.5	433	1042.00	232.00	BF	2.62	5.08	3	2.00	11.6	11.40	634.00	131.51	80.02	6/30/2005	19.00	-154.00	
PK 657	66361	74.00	57.00	6.91	10.08	0	663	6.7	579	1131.00	184.00	BF	3.00	6.08	9	4.00	11.2	12.70	740.00	141.73	92.73	5/13/2005	-14.00	-154.00	
O 14	59322	198.00	46.00	6.91	10.08	0	611	7.7	524	1222.00	184.00	BF	3.79	4.98	3	4.00	9.8	13.40	799.00	141.73	92.67	5/13/2005	-15.00	-154.00	

NT	59329	156.00	49.00	6.91	10.37	12.78	653	7.7	569	1156.00	195.00	BF	3.01	4.95	2	3.00	12.4	12.70	740.00	148.54	95.09	5/24/2005	57.00	-73.00
O168	66385	144.00	53.00	7.44	10.37	19.79	621	7.4	534	1100.00	195.00	BF	2.90	5.15	5	3.00	10.2	12.20	699.00	152.04	96.61	5/24/2005	78.00	-73.00
W 53	59317	160.00	50.00	6.91	10.08	0	624	6.6	538	1085.00	184.00	BF	2.98	5.30	5	3.00	11.8	12.00	682.00	155.23	97.57	5/13/2005	79.00	-73.00
O 281	66352	162.00	50.00	6.91	10.08	0	582	6.1	494	1084.00	184.00	BF	3.01	5.39	2	3.00	11.3	12.00	687.00	151.73	96.16	5/13/2005	56.00	-73.00
O 4	66353	104.00	51.00	7.44	10.37	7.36	440	4	357	947.00	195.00	BF	3.23	5.23	2	3.00	10.7	10.60	569.00	148.54	89.25	5/24/2005	44.00	-72.00
O 231	59302	197.00	55.00	6.91	10.08	12.18	664	7.1	580	1173.00	184.00	BF	3.22	5.66	2	3.00	13.1	13.20	781.00	151.73	101.02	5/13/2005	64.00	-71.00
YH4 15	66409	226.00	53.00	6.77	9.68	0	670	5.6	588	1064.00	169.00	BF	2.82	5.64	9	3.00	12.3	12.40	715.00	160.55	107.89	4/28/2005	83.00	-70.00
O27	59336	174.00	49.00	6.91	10.08	0	613	6	526	1116.00	184.00	BF	3.20	5.27	2	3.00	12.7	12.30	711.00	151.73	96.67	5/13/2005	58.00	-70.00
Y H4 29	66357	146.00	48.00	6.91	10.37	0	626	8.6	540	1107.00	195.00	BF	2.91	5.02	5	3.00	12.7	12.00	687.00	152.04	94.36	5/24/2005	77.00	-67.00
O247	59341	210.00	47.00	6.77	9.68	0	597	5.5	510	1052.00	169.00	BF	3.21	5.07	20	3.00	12.1	11.80	669.00	159.05	101.14	4/28/2005	68.00	-67.00
O 102	59311	173.00	48.00	6.91	10.08	0	596	6.8	509	1111.00	184.00	BF	3.27	5.17	2	3.00	10	12.20	700.00	151.73	95.60	5/13/2005	57.00	-66.00
O85	66386	167.00	48.00	6.91	10.08	0	615	5.9	528	1035.00	184.00	BF	2.75	5.03	2	3.00	11.4	11.90	676.00	151.73	99.10	5/13/2005	55.00	-65.00
O 192	59307	52.00	49.00	7.56	11.37	11.58	606	9	519	1274.00	232.00	BF	3.25	4.98	5	3.00	12.1	13.10	773.00	133.44	80.96	6/30/2005	38.00	-60.00
OR 121	66371	160.00	51.00	6.91	10.37	11.58	586	7.1	498	1083.00	195.00	BF	3.00	5.17	2	3.00	11.6	12.20	703.00	148.54	96.42	5/24/2005	54.00	-59.00
Y4 103	59332	103.00	51.00	6.92	11.09	11.58	623	9	537	1304.00	222.00	BF	3.46	5.27	5	3.00	12.4	13.60	815.00	137.53	85.96	6/20/2005	49.00	-48.00
NT	59335	195.00	52.00	6.91	10.08	0	607	6.2	520	1092.00	184.00	BF	3.11	5.61	2	2.00	11.2	12.30	708.00	155.73	100.97	5/13/2005	86.00	-47.00
W59	66404	155.00	50.00	6.91	10.37	0	627	7.5	541	1146.00	195.00	BF	3.10	5.30	3	2.00	16.7	13.30	791.00	137.18	94.69	5/24/2005	-29.00	-46.00
W61	59325	114.00	49.00	6.92	10.77	0	584	6.9	496	1060.00	210.00	BF	2.69	5.05	2	2.00	14.4	12.00	683.00	142.54	91.84	6/8/2005	58.00	-43.00
O266	59343	186.00	50.00	7.44	10.08	0	563	6.1	475	1042.00	184.00	BF	3.08	5.33	2	2.00	13.2	11.80	664.00	155.73	99.24	5/13/2005	81.00	-42.00
O61	66414	210.00	54.00	6.91	10.08	0	634	6	549	1101.00	184.00	BF	3.00	5.73	5	3.00	12.6	12.60	735.00	155.23	103.63	5/13/2005	86.00	-42.00
O265	59361	90.00	52.00	6.92	11.09	18.15	555	6.6	467	1096.00	222.00	BF	2.83	5.12	9	3.00	12.2	12.30	709.00	137.53	88.97	6/20/2005	43.00	-41.00
O 272	59350	151.00	52.00	6.92	10.77	0	673	8.7	591	1201.00	210.00	BF	2.91	5.44	2	3.00	13.3	13.70	823.00	138.54	94.94	6/8/2005	37.00	-39.00
O 100	59321	231.00	47.00	6.9	9.68	0	571	5.3	483	1016.00	169.00	BF	3.15	5.06	1	3.00	11.8	11.50	641.00	164.55	103.82	4/28/2005	100.00	-34.00
O51	66403	198.00	48.00	6.91	10.08	0	539	5.8	451	1029.00	184.00	BF	3.14	5.09	2	3.00	10.4	11.80	669.00	151.73	98.65	5/13/2005	54.00	-31.00
W 73	59309	206.00	47.00	7.44	10.08	0	585	6.8	497	1068.00	184.00	BF	3.10	4.92	2	2.00	14.1	11.90	679.00	155.73	99.01	5/13/2005	82.00	-27.00
O 40	59355	199.00	48.00	6.91	10.37	0	606	7.2	519	1127.00	195.00	BF	3.12	5.07	5	3.00	9.9	12.50	722.00	152.04	97.40	5/24/2005	81.00	-25.00
O224	59360	256.00	45.00	6.78	10.08	0	632	8.7	547	1287.00	184.00	BF	4.02	4.91	2	3.00	16.1	13.50	807.00	151.73	95.14	5/13/2005	66.00	-21.00
O 54	66412	243.00	49.00	6.91	10.08	0	607	6.9	520	1139.00	184.00	BF	3.36	5.31	2	3.00	11.4	13.00	763.00	151.73	101.64	5/13/2005	62.00	-18.00
O 255	59362	213.00	47.00	6.91	10.08	0	560	5.2	472	998.00	184.00	BF	2.86	4.89	2	3.00	12.3	11.90	672.00	151.73	102.17	5/13/2005	55.00	-17.00
O 99	66377	256.00	47.00	6.91	10.08	0	629	8.1	543	1217.00	184.00	BF	3.67	5.12	2	3.00	14.5	13.30	795.00	151.73	99.12	5/13/2005	65.00	-16.00
O210	59345	257.00	48.00	6.91	10.08	0	659	8	575	1195.00	184.00	BF	3.37	5.17	20	3.00	11.9	13.30	791.00	153.73	101.76	5/13/2005	80.00	-14.00
O91	59330	209.00	48.00	6.91	10.08	15.66	501	4.8	414	993.00	184.00	BF	3.15	4.76	2	3.00	10.8	11.60	651.00	151.73	99.47	5/13/2005	53.00	-14.00
O 249	59319	236.00	49.00	6.91	10.08	0	597	5.4	510	1039.00	184.00	BF	2.88	5.22	5	3.00	11	12.30	706.00	155.23	105.48	5/13/2005	82.00	-5.00
O 77	59315	244.00	44.00	6.91	10.08	0	577	7.9	489	1183.00	184.00	BF	3.77	4.76	5	3.00	11.2	12.50	728.00	155.23	95.53	5/13/2005	85.00	-5.00
O119	66413	209.00	46.00	7.44	10.37	0	547	7.4	459	1115.00	195.00	BF	3.36	4.82	5	2.00	10.8	11.90	677.00	156.04	94.74	5/24/2005	103.00	-1.00
O211	66388	252.00	44.00	6.78	10.08	0	582	7.2	494	1172.00	184.00	BF	3.69	4.76	20	3.00	12.2	12.70	739.00	153.73	96.93	5/13/2005	75.00	-1.00
Y HH 25	59304	292.00	47.00	6.91	10.08	0	698	8.9	619	1248.00	184.00	BF	3.42	5.05	2	3.00	15.2	14.00	849.00	151.73	103.22	5/13/2005	69.00	2.00
293	59324	247.00	44.00	6.91	10.08	0	563	7	475	1107.00	184.00	BF	3.43	4.65	20	3.00	10.3	12.30	708.00	153.73	98.32	5/13/2005	72.00	5.00
O273	59359	236.00	44.00	6.91	10.37	0	569	7.4	481	1094.00	195.00	BF	3.14	4.65	20	3.00	11.7	12.40	716.00	150.54	98.53	5/24/2005	69.00	13.00
O212	66384	281.00	47.00	6.91	10.37	0	636	9	551	1272.00	195.00	BF	3.70	5.06	2	3.00	12.2	14.00	847.00	148.54	98.91	5/24/2005	65.00	18.00
O106	66392	202.00	46.00	7.44	10.37	15.42	424	5	343	966.00	195.00	BF	3.20	4.60	1	3.00	8.8	10.90	588.00	156.04	94.98	5/24/2005	89.00	20.00
O122	66407	245.00	46.00	7.44	10.08	0	480	4	394	963.00	184.00	BF	3.09	4.88	5	3.00	11.3	11.40	637.00	155.23	102.68	5/13/2005	74.00	27.00
O 196	66351	309.00	43.00	6.91	10.08	0	634	7.6	549	1180.00	184.00	BF	3.43	4.51	1	3.00	11.3	12.90	762.00	159.23	102.82	5/13/2005	119.00	48.00
W66	66401	305.00	46.00	6.91	10.37	0	589	7.4	502	1203.00	195.00	BF	3.60	4.96	20	3.00	12.3	13.50	811.00	150.54	101.49	5/24/2005	79.00	54.00
O 244	59351	323.00	43.00	6.78	10.08	0	559	7.1	471	1178.00	184.00	BF	3.84	4.67	5	3.00	11.7	13.00	767.00	155.23	101.07	5/13/2005	89.00	60.00
					10.04			6.47		24474.00			413.14				11.74	12.15	695.94	19607.71	93.64			

DECATUR BEEF ALLIANCE
DEADS AND RAILERS

LOT	STA	RID	VID	DESC	DATEF	DOF	WTR	NR	INCOME	TCOST	CCOST	FEED	YARD	PROC	TREAT	OTHER
4441	D	O84	59326	RESPIRAT	12/16/04	36	537	-683.12	0.00	683.12	\$622.79	\$35.14	\$1.80	\$6.26	\$10.98	\$6.15
		O 69	66373	SEPTIC A	1/8/05	59	605	-801.78	0.00	801.78	\$685.58	\$72.58	\$2.95	\$6.26	\$27.65	\$6.76
TOTAL HEAD:			2				95	(\$1,485)	\$0	\$1,485	\$1,308	\$108	\$5	\$13	\$39	\$13

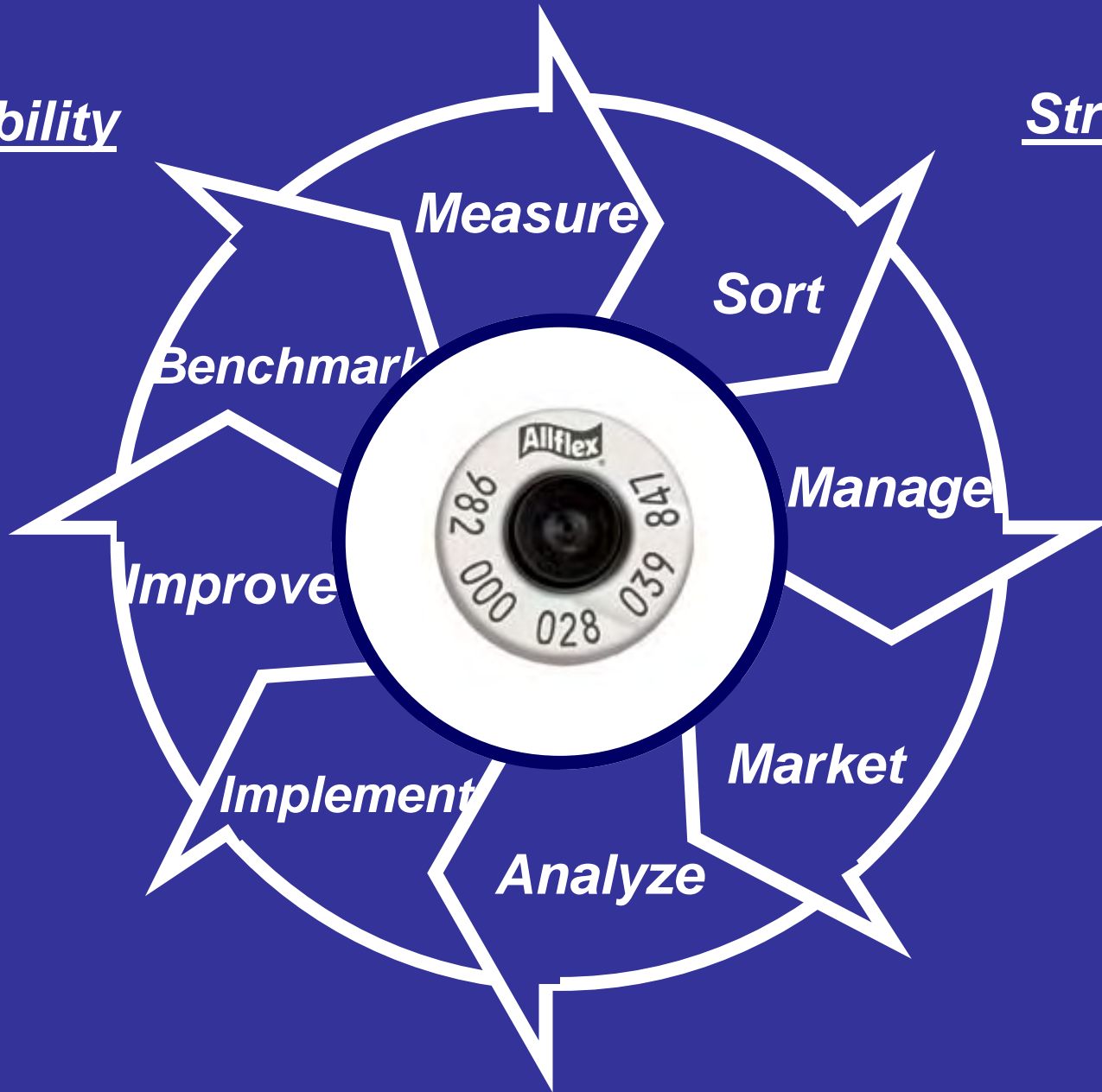
DCFY Animal Trace and Data Exchange System



**Automated
Data Exchange
With Midwest Micro Systems
CowSense**

Profitability

Strategies



Measure

Sort

Manage

Market

Analyze

Implement

Improve

Benchmark

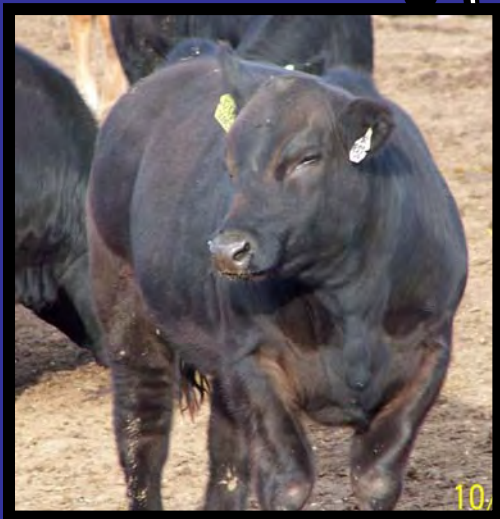
ADJ





CHAPS 2000

CalfAID TM



Summary

- **RFID works**
 - DCFY owns over 40,000 tags, most have been reused over twelve times.
- **Since 1994**
- **Don't expect to put a tag in the ear and get the data**
- **Share the risk – Share the Rewards – Share the Data**



www.decaturfedyard.com